



Title	Development of dentition: From initiation to occlusion and related diseases
Author(s)	Kurosaka, Hiroshi; Itoh, Shinsuke; Morita, Chisato et al.
Citation	Journal of Oral Biosciences. 2022, 64(2), p. 159-164
Version Type	AM
URL	<a href="https://hdl.handle.net/11094/103594">https://hdl.handle.net/11094/103594</a>
rights	© 2022. This manuscript version is made available under the CC-BY-NC-ND 4.0 license <a href="https://creativecommons.org/licenses/by-nc-nd/4.0/">https://creativecommons.org/licenses/by-nc-nd/4.0/</a>
Note	

*The University of Osaka Institutional Knowledge Archive : OUKA*

<https://ir.library.osaka-u.ac.jp/>

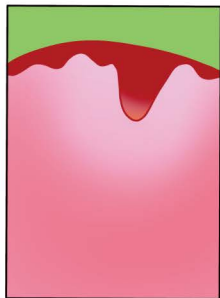
The University of Osaka

# Epithelium

## Intraosseous eruption

WNT  
EDAR  
EDA

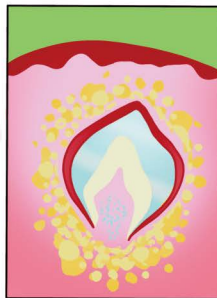
CSF1  
RANK  
RANKL



bud



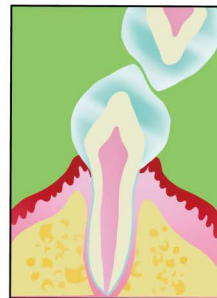
cap to bell



late bell



eruption



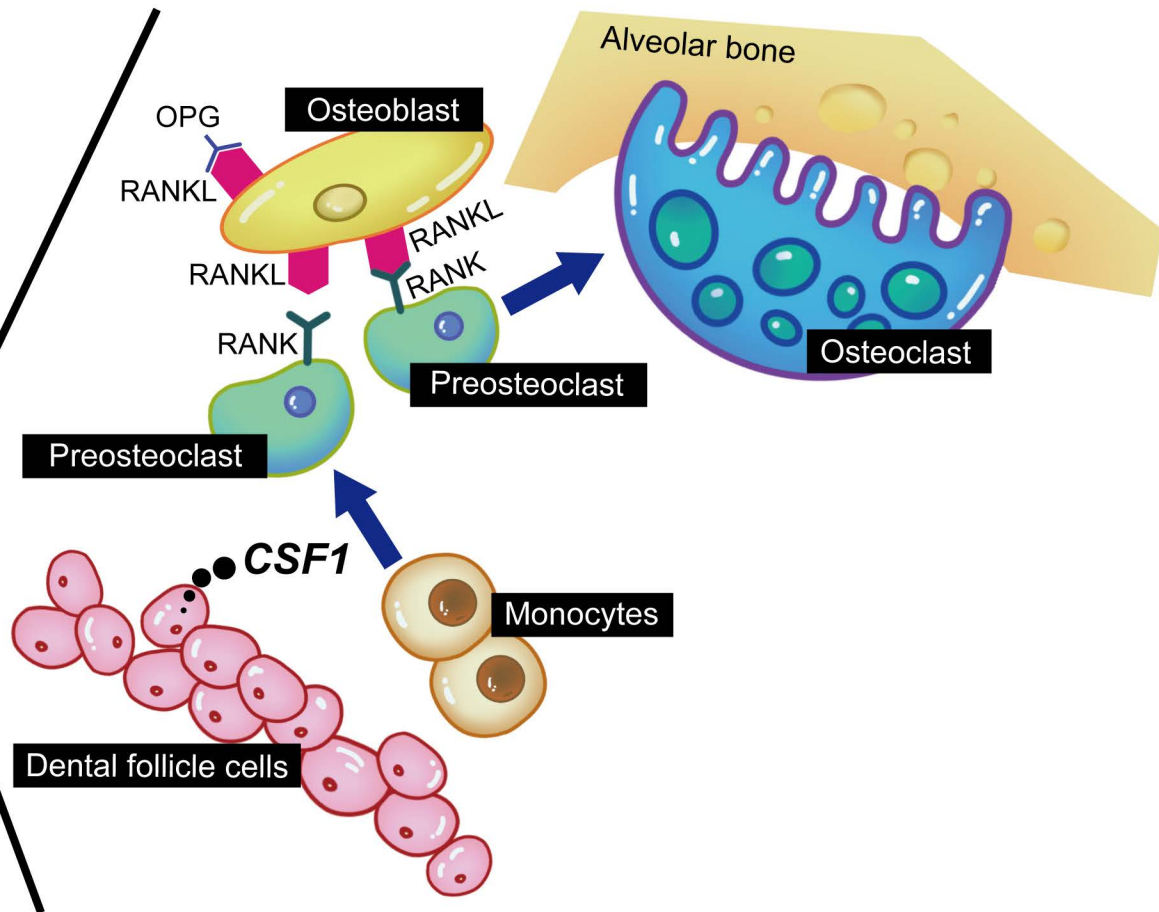
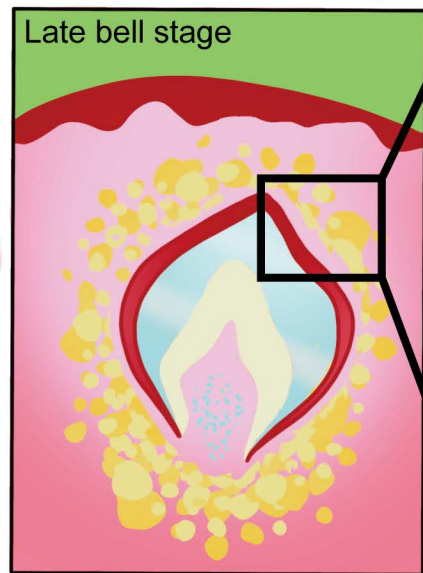
occlusion

WNT  
MSX1  
PAX9  
AXIN2

PTH1R  
GNAS

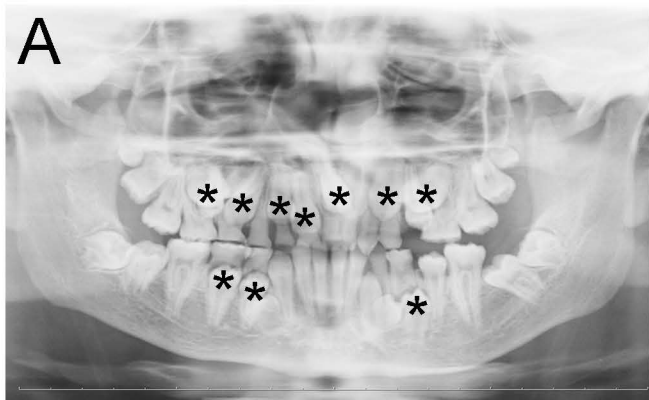
# Mesenchyme

## Extraosseous eruption



## Cleidocranial dysplasia (CCD)

Initial



Post-traction



## Primary failure of eruption (PFE)



# Current medicine

# Precision medicine

