



Title	Institutional Repositories in Korea
Author(s)	LEE, Nanee (EWAH Womans University, Korea)
Citation	
Issue Date	2008-01-30
Text Version	
URL	http://hdl.handle.net/11094/14160
DOI	
rights	

Osaka University Knowledge Archive : OUKA

<https://ir.library.osaka-u.ac.jp/repo/ouka/all/>



Institutional Repositories in Korea

Nanee LEE, nnlee@ewha.ac.kr
Information Services and Resources Librarian
Ewha Womans University Library, Seoul, Korea

DRF International Conference 2008
Open Access and Institutional Repository in Asia-Pacific
30th and 31st January, Osaka, JAPAN



Agenda

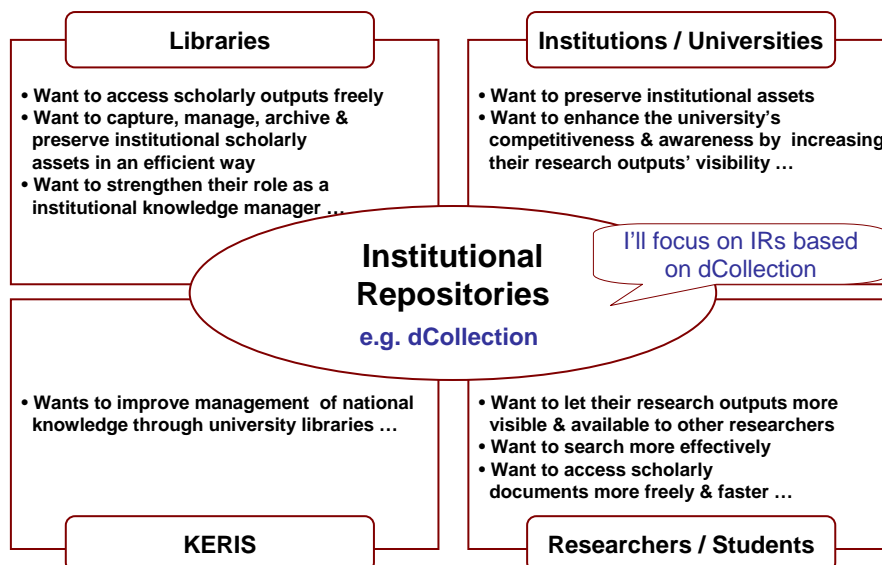
- Open Access in Korea
- Background of IRs in Korea
- Overview of dCollection
- Activities for Facilitating IRs
- Good Practices of Content Recruiting in IR
- Future Plans and Possibilities



Open Access in Korea

- Institutional Repositories
 - » IRs based on dCollection system developed by KERIS(Korea Research & Information Service)
 - » IRs based on DSpace
- Open Access Journals
 - » *Academic Society Village* hosted by KISTI(Korea Institute of Science and Technology Information)
 - » Academic scholarly journals captured and disseminated via dCollection homepage and RISS4U
- Open Access Forum in preparation sponsored by KRF(Korea Research Foundation)

Background of IRs in Korea



Overview of dCollection

- dCollection denotes digital Collection
- Open access institutional repository system developed since 2003 by KERIS
- Platform to capture, manage, distribute, and preserve the metadata and/or fulltext of scholarly outputs produced in universities
- System for self-archiving, harvesting, control and service of scholarly outputs

- One of major collaborations among Korean academic libraries



Ewha Womans University Library
이화여자대학교 도서관



Overview of dCollection (continued)

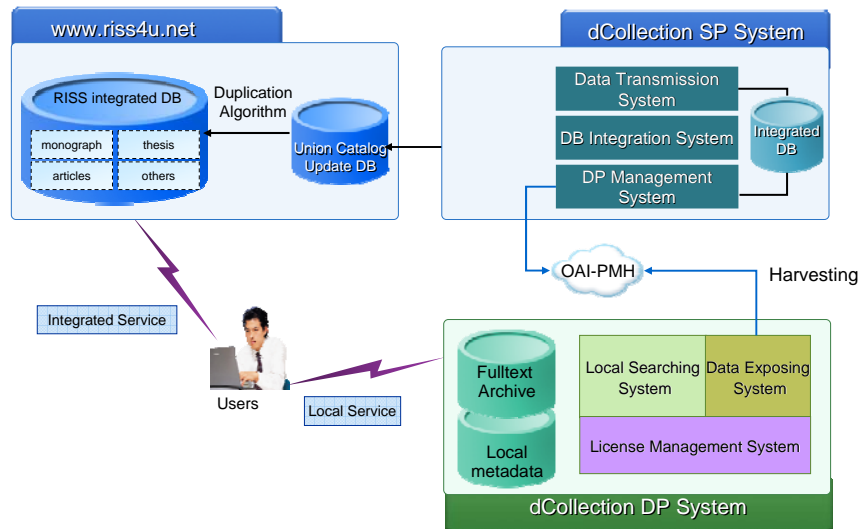
- Uses metadata based on extension of DC with additional elements
- Harvests metadata and full-text URL to KERIS central system using SP(Service Provider) module of OAI-PMH
- Expands services to end-users by transferring dCollection DB to RISS integrated DB on RISS4U website
- Provides standard interface by using OAI-PMH v2.0 for distributing metadata



Ewha Womans University Library
이화여자대학교 도서관



System Architecture of dCollection

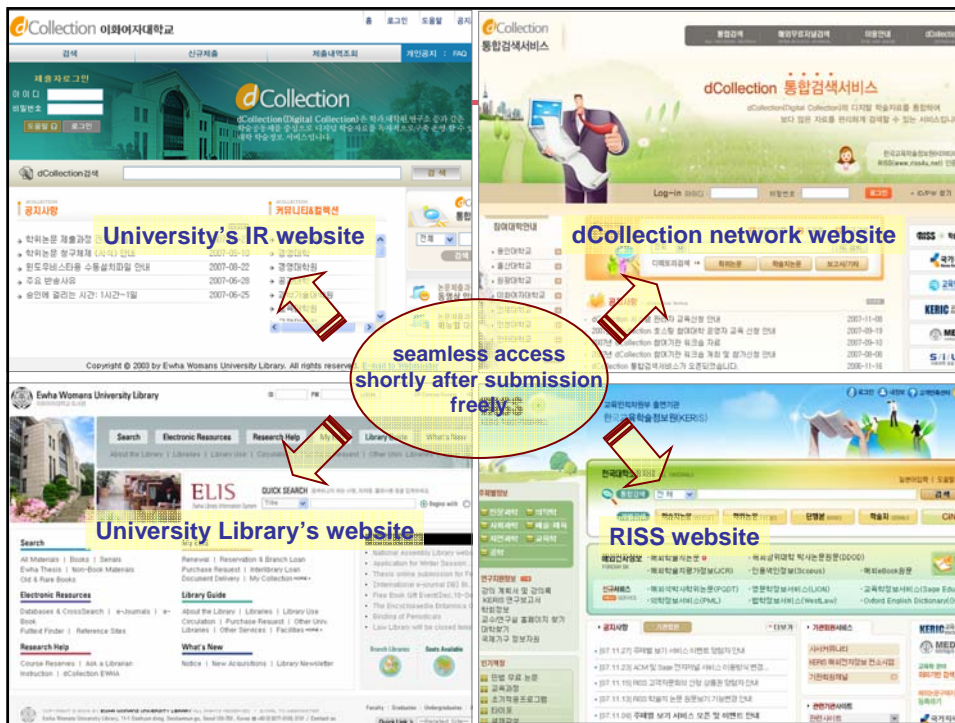


Park, Hong Seok & Jang, Keum Yeon. 2006. "dCollection : The National Network of University-Based Respository in Korea." paper presented at the *World Library and Information Congress: 72nd IFLA General Conference and Council*, 20-24 Aug. 2006, Seoul, Korea.



Overview of dCollection (continued)

- Used in 215 universities as of Dec., 2007 since 4 university libraries participating in pilot project in 2003, including
 - » 138 academic libraries using web-based hosting system
 - » 63 active academic libraries
- Over 538,707 items in service as of Jan., 2008 including
 - » 412,364 dissertations/theses (76.5%), 126,343 articles (23.5%)
 - » about 104,930 items newly deposited since dCollection was installed, others transferred from older digital libraries



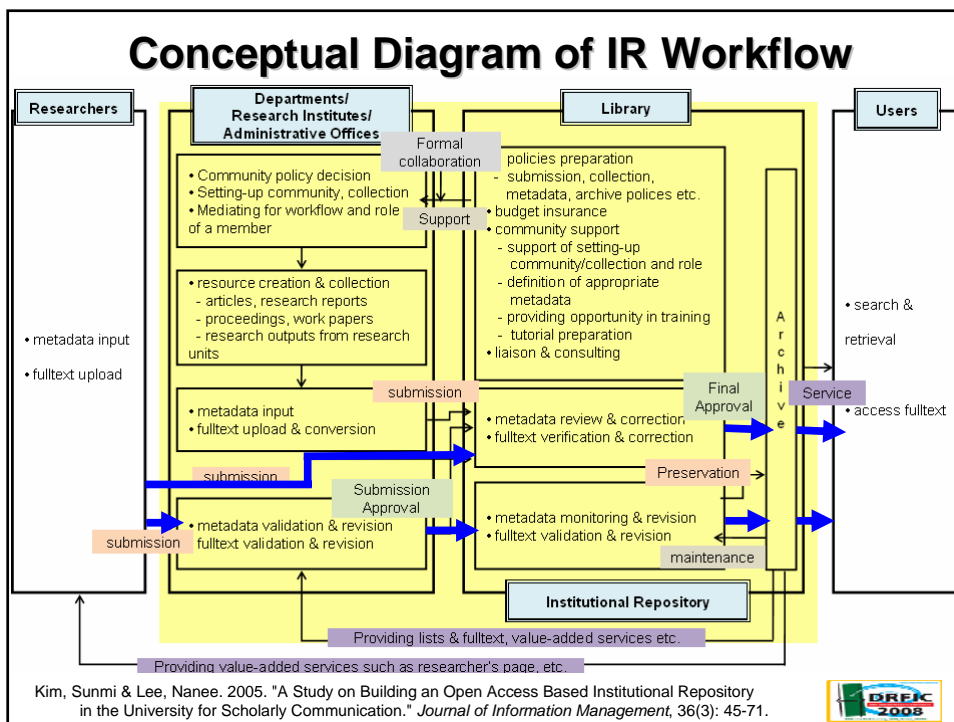
Activities for Facilitating IRs

- **Working committees on the basis of librarians' active participation in**
 - » Standardizing metadata and workflow
 - » Discussing functional requirements for enhancing dCollection system
 - » Issuing guidelines about describing metadata, promoting IR, content recruiting, etc.
- **Development of best practices through 'Model University Library Program', such as**
 - » Preparation of Univ. regulation for digital submission of theses
 - » Contract with research institutes in the Univ. to participate in IR
 - » Connecting Univ.'s performance DB with IR

Activities for Facilitating IRs (continued)

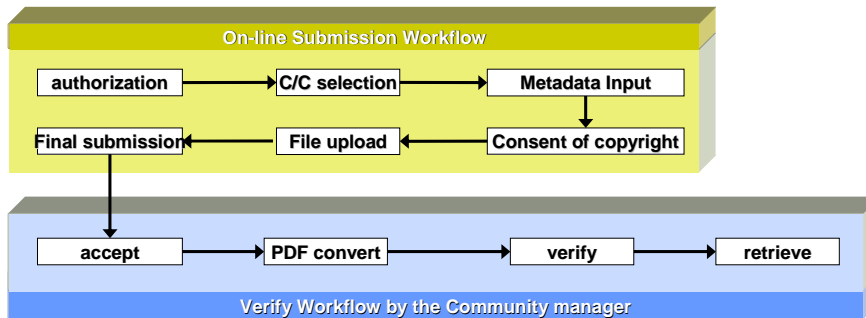
- Research projects cooperated with researchers and librarians such as
 - » *Building the Management Model for the National Consortium of Institutional Repositories (2005)*
 - » *Evaluation Model for the National Consortium of Institutional Repositories of Korean Universities (2006)*
 - » *Building an Management Model of University Performance Database for Facilitating Institutional Repository (2006)*

Conceptual Diagram of IR Workflow



Self-Archiving of Dissertations/Theses

- Digital submission of dissertation/thesis became regulatory in most of universities
- Graduate students self-archive dissertations/theses
- Graduate students may agree for OA and use CC for copyright condition
- Submitted files are converted automatically into PDF format
- Librarians proofread metadata and verify converted file status



Capturing University Units' Publications

- Capturing research outputs created by research units in the university, such as scholarly journals, research papers, etc.
- Under contract with research institutes, academic societies, and laboratories, etc.
- Can be **mediated** by librarians or deposited by individual units
- May provide fulltext with embargo (in delayed open access) on a research unit's request
- e.g. Ewha Womans Univ.'s, Pusan Univ.'s IR

Capturing University Units' Publications

Asian Journal of Women's Studies with 2 years embargo

Asian Journal of Women's Studies(AJWS)

Asian Center for Women's Study ; Ewha Womans University Press [KCI 등재, SSCI, SCOPUS] [1225-9276]

- 선행 학술지명[AJWS]

권호정보

년도

2006	Vol.12, No.1		
2005	Vol.11, No.4	Vol.11, No.3	Vol.11, No.2
2004	Vol.10, No.4	Vol.10, No.3	Vol.10, No.2
2003	Vol.9, No.4	Vol.9, No.3	Vol.9, No.2
2002	Vol.9, No.1	Vol.9, No.1	Vol.9, No.1

권호 : Vol.10, No.3

간행

- Gender Construction in the Media
BATHLA, Sonia [2004]
- Ethnically Targeted Rape as "Terrorism"
LOGSDON, Martha G. [2004]
- Gender Differences in Accounting Information Processing in South Korea
CHUNG, Tammy [2004]
- Welding Masculinity inside Abu Ghraib
ENLOE, Cynthia [2004]
- Gender, Development, and Citizenship
KHULLAR, Mala [2004]

제목명	Gender Construction in the Media
제목명	A Study of Two Indian Women Politicians
ISSN	40142175
저자명	BATHLA, Sonia
학술지명	Asian Journal of Women's Studies(AJWS)
권호사항	Vol.10 No.3 [2004]
발행처	Asian Center for Women's Study; Ewha Womans University Press
자료유형	학술기상
수록면	7-34 (28쪽)
언어	English
발행년도	2004
KDC	337
등록정보	KCI 등재,SSCI,SCOPUS
주제명	India women politicians news media gender stereotypes women's portrayal political conflict
교유 URL	http://www.riss4u.net/riss4u/A40142175



Ewha Womans University Library

이화여자대학교 도서관



Connecting IR with Univ. Performance DB

- Capturing scholarly outputs by connecting IR with university performance database for
 - » collecting research outputs produced by faculties exhaustively
 - » reducing redundant work to submit metadata
- Submission of research list into performance system is mandatory in many universities
- Pilot project ongoing in Ewha Womans Univ.'s IR (dCollection EWHA) in cooperation with the Univ. Research Support/Grants Office



Ewha Womans University Library

이화여자대학교 도서관



Connecting IR with Univ. Performance DB (Pilot Project)

Work with Univ. Research Support/Grants Office
To Share Information About Univ. Research Performance DB

Work with Univ. IT Center
To Develop Connecting Program and Share Database

Work with Research Project Team and KERIS
To Discuss About Metadata Extension and Program Enhancement

Work within Library
To Establish Policies About Workflow, Support for Early Adopters

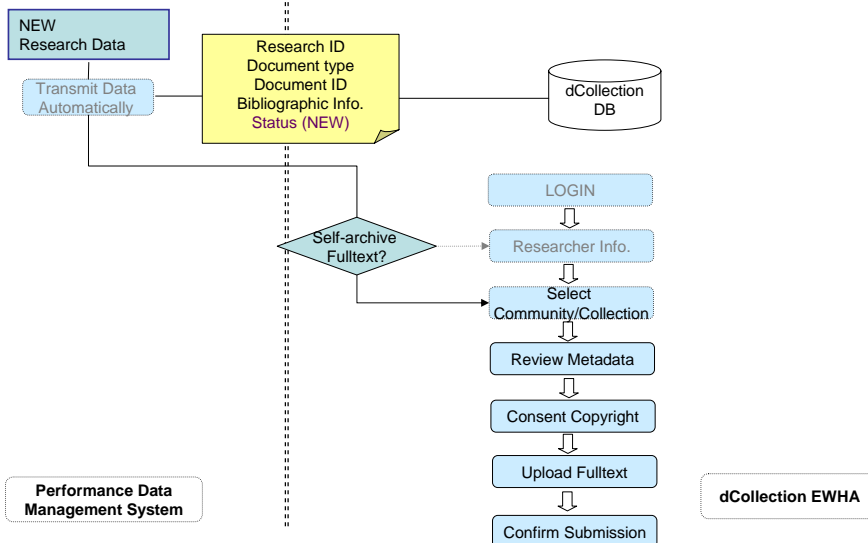
Initiate Contact with a faculty in Early Adopters and Work with them
To Identify their needs, Request Participation in IR and Sharing Agreement

Work with Early Adopters
For Deposit of F/T and Additional Copyright Consent Required by Publishers

...

Over 2,200 metadata produced by
College of Pharmacy Faculties is
prepared and we acquire agreement
about IR involvement, as of Dec. 2007.

Connecting IR with Univ. Performance DB (Connection Flow)



Connecting IR with Univ. Performance DB (Services in Preparation for Early Adopters)

Management of research lists, fulltext, and data in IR

Creation of research lists in various format

Chung, J., Kim, S. Y., Lim, J., Choi, H., Kang, S., Yoon, H., Ryu, H., Kang, D. W., Lee, J., Kang, B., Choi, S., Toth, A., Pearce, L. V., Pavlyukovets, V. A., Lundberg, D. J. and Blumberg, P. M. (2007) α -Substituted N-(4-tert-butylbenzyl)-N'-[4-(methylsulfonylamino)benzyl]thiourea analogues as potent and stereospecific TRPV1 antagonists. *Biorganic & Medicinal Chemistry*, 15, 6043-6053. [oCollection 원문 보기] [출판사 원문 보기]

Soltanshahi, F., Mansley, T., Choi, S. and Clark, R. (2006) Balancing focused combinatorial libraries based on multiple GPCR ligands. *Journal of Computer-Aided Molecular Design*, 20, 529-538. [oCollection 원문 보기] [출판사 원문 보기]

Wang, T., Lee, H. J., Toshi, D. K., Kim, H. O., Pal, S., Choi, S., Lee, Y., Moon, H. R., Zhao, L. X., Lee, K. M. modeling studies of 5'-hydrogen bonding donor. *Biorganic & Medicinal Chemistry Letters*, 17, 1005-1008. [출판사 원문 보기]

Embedding IR search page into department's homepage

Future Plans and Possibilities

- Developing additional services to increase faculties' and university units' participation, such as researcher's and community's pages (2008)
- Functional enhancement of IR system to handle preprints' and postprints' additional information more efficiently, such as publisher's copyright policy, etc. (2008)
- Constructing copyright database which covers Korean scholarly publisher's policies related with IR (2008)

Future Plans and Possibilities (continued)

- Extending metadata to describe materials with various types and preparing guidelines about metadata (2007-)
- Considering adaptation and/or crosswalks of E-Learning materials
- Considering the connection IR with electronic journal publishing system
- Considering overseas dissemination of Korean open access IR database

Thank You !

ありがとうございます。

감사합니다.