



Title	Back pages, Osaka J Math, Volume31, Number 4
Author(s)	
Citation	Osaka Journal of Mathematics. 31(4)
Issue Date	1994
Text Version	publisher
URL	http://hdl.handle.net/11094/22012
DOI	
rights	
Note	

Osaka University Knowledge Archive : OUKA

<https://ir.library.osaka-u.ac.jp/repo/ouka/all/>

ISSN 0030-6126

OSAKA JOURNAL OF MATHEMATICS

EDITED BY

M. IKAWA Y. IMAYOSHI
A. KAWAUCHI M. MIYANISHI
H. TANABE

WITH THE COOPERATION OF

A. FUJIKI	T. IBUKIYAMA	T. KAMAE
M. KANEDA	A. KASUE	K. KAWAKUBO
N. KAWANAKA	N. KOISO	T. KOMATSU
S. KOTANI	T. MABUCHI	A. MATSUMURA
M. NAGASE	M. NAMBA	T. NISHITANI
H. OZEKI	Y. SAKANE	M. TAKEUCHI
Y. TSUSHIMA	S. USUI	T. WATANABE
	Y. YAMAMOTO	

Vol. 31

1994

PUBLISHED JOINTLY BY THE
DEPARTMENTS OF MATHEMATICS
OSAKA UNIVERSITY AND OSAKA CITY UNIVERSITY

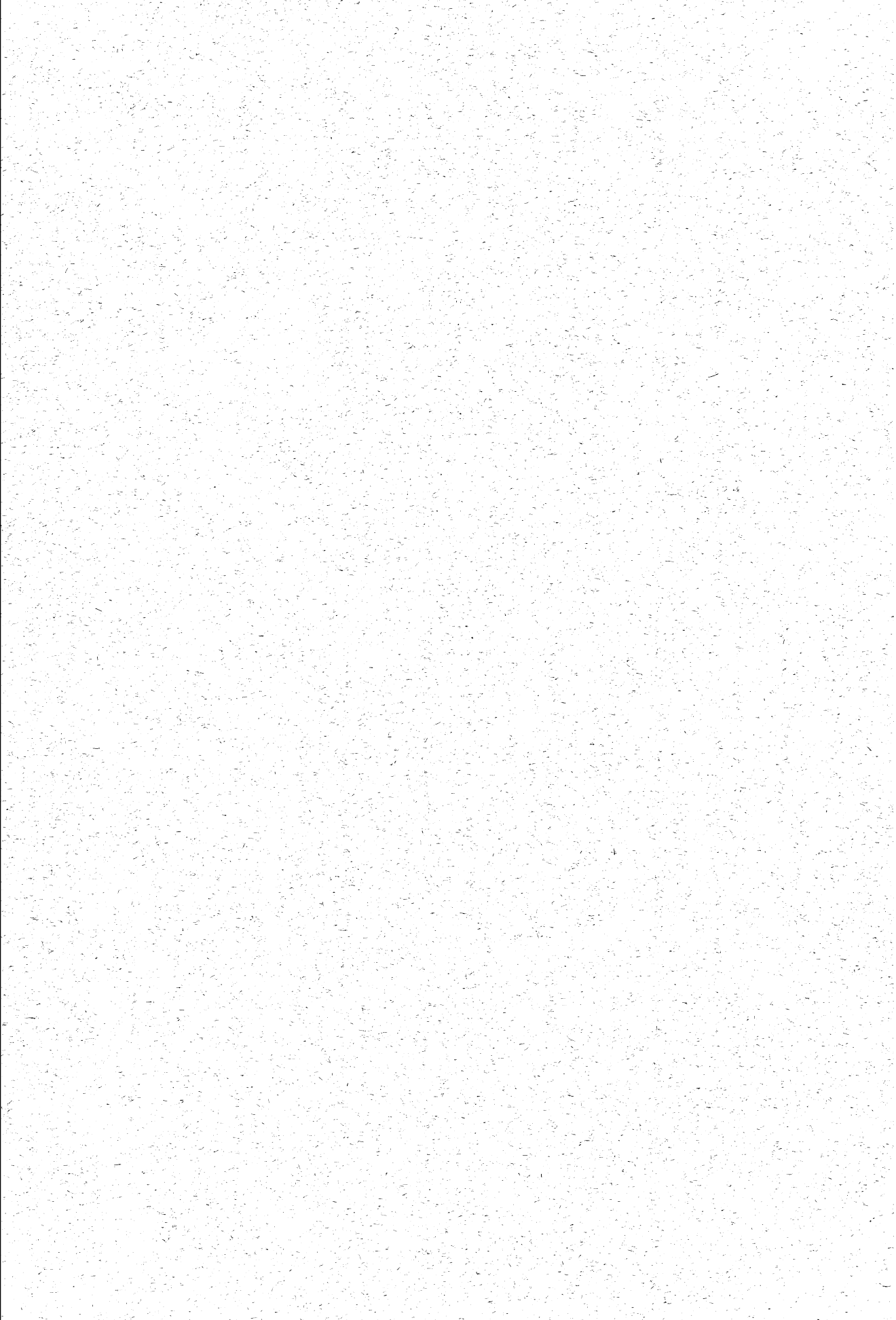
INDEX

ARAKAWA, T.: On special values at $s=0$ of partial zeta-functions for real quadratic fields.	79
BURNS, J. and CLANCY, M.J.: Polar sets as nondegenerate critical submanifolds in symmetric spaces.	533
CLANCY, M.J. and BURNS, J.: Polar sets as nondegenerate critical submanifolds in symmetric spaces.	533
FAVINI, A. and TANABE, H.: On regularity of solutions to n -order differential equations of parabolic type in Banach spaces.	225
FERNOW, B. and KRENGEL, U.: Speed limit operators for oscillating speed.	939
FUKUSHIMA, H.: On p -radical groups G and the nilpotency indices of $J(kG)$	773
GARCÍA, J.L. and NGUYEN, V.D.: Some decomposition properties of injective and pure-injective modules.	95
GUILLOPÉ, L.: Entropies et spectres.	247
HOSHINO, M. and TAKASHIMA, S.: On Lambek torsion theories, II.	729
HSU, E.P.: A domain monotonicity property of the Neumann heat kernel.	215
HWANG, A.D.: On existence of Kähler metrics with constant Scalar curvature.	561
IWASAKI, C.: The asymptotic expansion of the fundamental solution for parabolic initial-boundary value problems and its application.	663
JOHNSON, N.L.: Half nearfield planes.	61
KAMATA, M.: The multiplicative genus associated with the formal group law $(x+y-2axy)/(1-(a^2+b^2)xy)$	473
KANENOBU, T. and KAZAMA, K.: The peripheral subgroup and the second homology of the group of a knotted torus in S^4	907
KATO, S.: Maximal solutions of the scalar curvature equation on open Riemannian manifolds.	355
KAWAKAMI, T.: Nonisomorphic algebraic models of Nash manifolds and compactifiable C^∞ manifolds.	831
KAWAUCHI, A.: Splitting a 4-manifolds with infinite cyclic fundamental group.	489

KAZAMA, K. and KANENOBU, T.: The peripheral subgroup and the second homology of the group of a knotted torus in S^4	907
KITANO, T.: Reidemeister torsion of the figure-eight knot exterior via $SL(2; \mathbf{C})$ -representations.	523
KOBAYASHI, T. and NISHI, H.: A necessary and sufficient condition for a 3-manifold to have genus g Heegard splitting (A proof of Hass-Thompson conjecture).	109
KOMATSU, K.: Correction to "A boundary link is trivial if the Lustrnik-Schnirelmann category of its complement is one".	487
KOMIYA, K.: Equivariant critical point theory and ideal-valued cohomological index.	417
KRENGEL, U. and FERNOW, B.: Speed limit operators for oscillating speed.	939
MARUO, K. and PARK, D.G.: Existence and uniqueness of solutions for integrodifferential equations with time delay in Hilbert space.	629
MASLOWSKI, B. and SEIDLER, J.: Ergodic properties of recurrent solutions of stochastic evolution equations.	965
MASUDA, M. and SCHULTZ, R.: Generalized Rochlin invariants of fixed point sets.	387
MATSUZAKI, K. and VELLING, J.A.: Notes on projective structures and Kleinian groups.	165
MIYAZAWA, Y.: Conway polynomials of periodic links.	147
MORIMOTO, K.: On the additivity of h -genus of knots.	137
MURAI, M.: Characterizations of p -nilpotent groups.	1
—————: Block induction, normal subgroups and characters of height zero.	9
NAKAMURA, I.: Moishezon Fourfolds Homeomorphic to Q_c^4	787
NAKAZAWA, N.: Asymptotic expansion of the Bergman kernel for strictly pseudoconvex complete Reinhardt domains in \mathbf{C}^2	291
NEGORO, A.: Stable-like processes: construction of the transition density and the behavior of sample paths near $t=0$	189
NGUYEN, V.D. and GARCÍA, J.L.: Some decomposition properties of injective and pure-injective modules.	95
NISHI, H. and KOBAYASHI, T.: A necessary and sufficient condition for a 3-manifold to have genus g Heegard splitting (A proof	

of Hass-Thompson conjecture).	109
NISHIO, M. and SUZUKI, N.: Minimal thickness and uniqueness of kernel functions for the heat equation in several variables.	331
PARK, D.G. and MARUO, K.: Existence and uniqueness of solu- tions for integrodifferential equations with time delay in Hil- bert space.	629
PARK, K.K.: Continuity of directional entropy.	613
RAJU, A.S.: A characterization of translation planes and dual translation planes of characteristic $\neq 2$	51
SAKAI, K.: Pseudo orbit tracing property and strong transversality of diffeomorphisms on closed manifolds.	373
SAKUMA, M.: Minimal genus Seifert surfaces for special arbore- scent links.	861
SCHULTZ, R. and MASUDA, M.: Generalized Rochlin invariants of fixed point sets.	387
SEIDLER, J. and MASLOWSKI, B.: Ergodic propeties of recurrent solutions of stochastic evolution equations.	965
SHI, J.-Y.: Left cells in the affine Weyl group $Wa(\tilde{D}_4)$	27
SHIBATA, K.: Unoriented analogue of elliptic genera.	431
SHIMADA, N.: A cochain complex associated to the Steenrod algebra.	455
SUZUKI, N. and NISHIO, M.: Minimal thickness and uniqueness of kernel functions for the heat equation in several variables.	331
TAKASHIMA, S. and HOSHINO, M.: On Lambek torsion theories, II.	729
TAKEUCHI, M.: Lagrangean contact structures on projective cotan- gent bundles.	837
TANABE, H. and FAVINI, A.: On regularity of solutions to n -order differential equations of parabolic type in Banach spaces.	225
TERAI, N.: Homogeneous complete intersection Hodge algebras on simplicial complexes.	341
UEKI, N.: On spectra of random Schrödinger operators with magnetic fields.	177
UNO, K.: Dade's conjecture for tame blocks.	747
USHITAKI, F.: A generalization of a theorem of Milnor.	403

—————: On G - h -cobordisms between G -homotopy spheres.	597
VELLING, J.A. and MATSUZAKI, K.: Notes on projective structures and Kleinian groups.	165
WATANABE, T.: The Chern character of the symmetric space $SU(2n)/SO(2n)$	923
YOSHIKAWA, K.: An enumeration of surfaces in four-space.	497



CONTENTS

UNO, K.: Dade's conjecture for tame blocks.	747
FUKUSHIMA, H.: On p -radical groups G and the nilpotency indices of $J(kG)$	773
NAKAMURA, I.: Moishezon Fourfolds Homeomorphic to Q_c^4	787
KAWAKAMI, T.: Nonisomorphic algebraic models of Nash mani- folds and compactifiable C^∞ manifolds.	831
TAKEUCHI, M.: Lagrangean contact structures on projective cotan- gent bundles.	837
SAKUMA, M.: Minimal genus Seifert surfaces for special arbore- scent links.	861
KANENOBU, T. and KAZAMA, K.: The peripheral subgroup and the second homology of the group of a knotted torus in S^4	907
WATANABE, T.: The Chern character of the symmetric space $SU(2n)/SO(2n)$	923
FERNOW, B. and KRENGEL, U.: Speed limit operators for oscillat- ing speed.	939
MASLOWSKI, B. and SEIDLER, J.: Ergodic properties of recurrent solutions of stochastic evolution equations.	965