

Title	Figures , Memoirs of the Faculty of Letters Osaka University Vol. XXXV
Author(s)	
Citation	大阪大学文学部紀要. 1995, 35
Version Type	VoR
URL	<a href="https://hdl.handle.net/11094/6048">https://hdl.handle.net/11094/6048</a>
rights	
Note	

*Osaka University Knowledge Archive : OUKA*

<https://ir.library.osaka-u.ac.jp/>

Osaka University

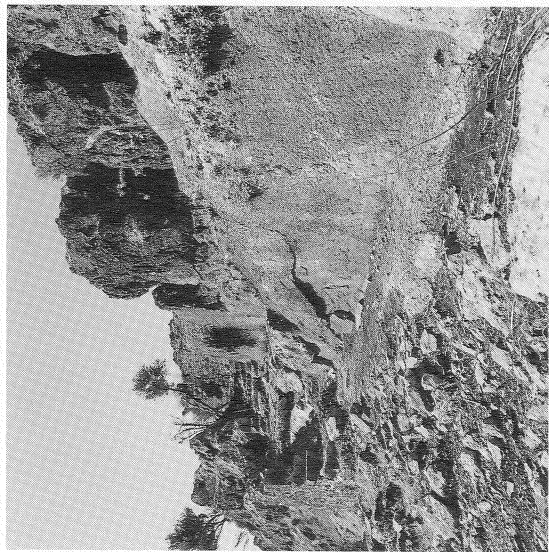


Fig. 72. East approach to Basilica, Karacaören Ada.

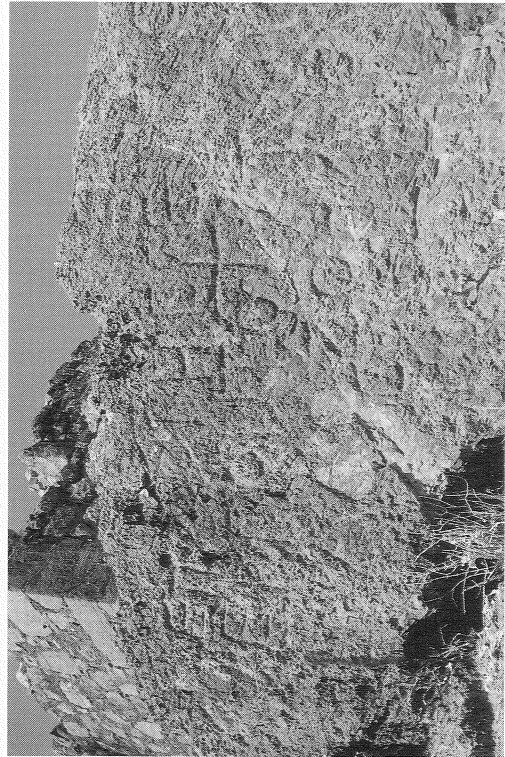


Fig. 73. South-east approach to Basilica, Karacaören Ada.

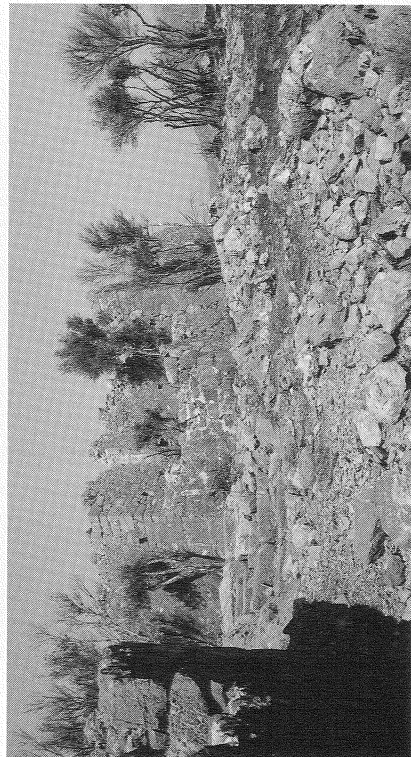


Fig. 74. South-west approach to Basilica, Karacaören Ada.



Fig. 76. Painted tomb, Karacaören Ada.

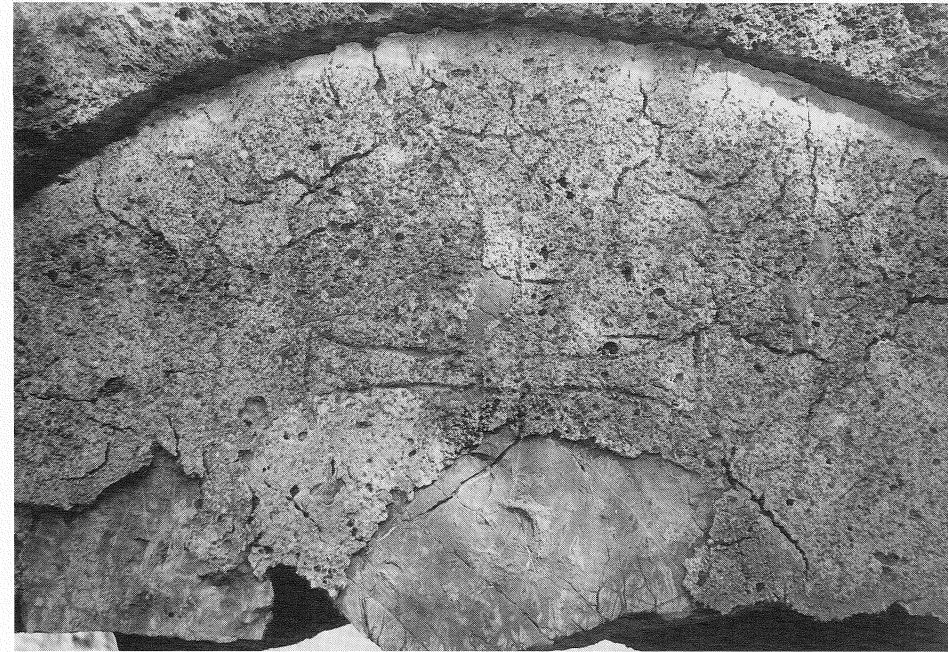


Fig. 75. Basilica on Karacaören Ada. Cross on lunette.



Fig. 77. Ölüdeniz Beach Basilica. Atrium?



Fig. 78. Ölüdeniz Lagoon Basilica. Apse.

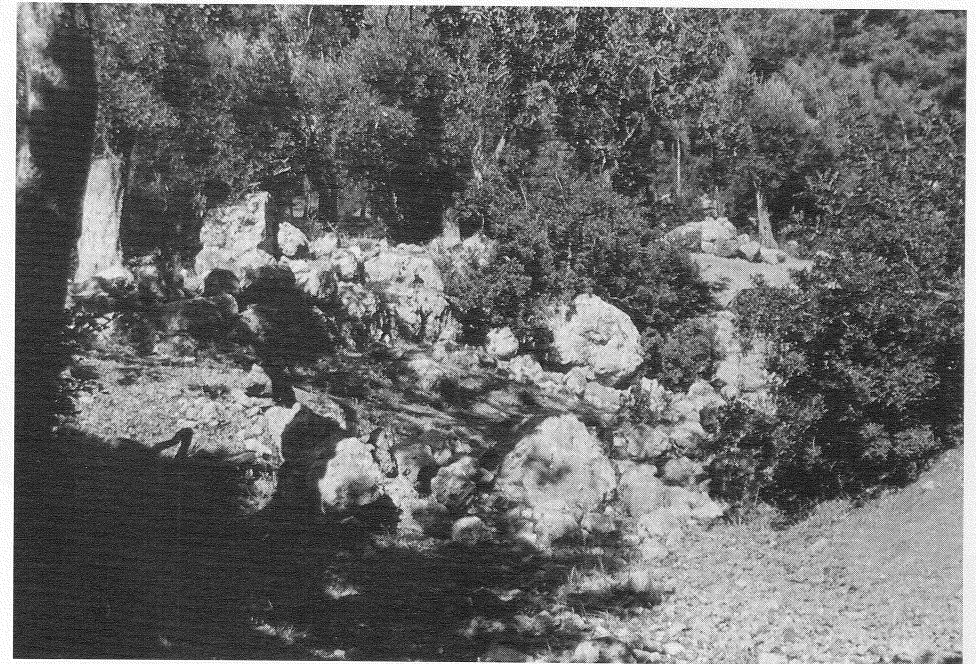


Fig. 79. Ölüdeniz Lagoon Basilica. Terrace wall.



Fig. 80. Ölüdeniz Lagoon Basilica. Cistern.



Fig. 81. Kaya Village.



Fig. 82. Ölüdeniz Lagoon Basilica. Capitals.

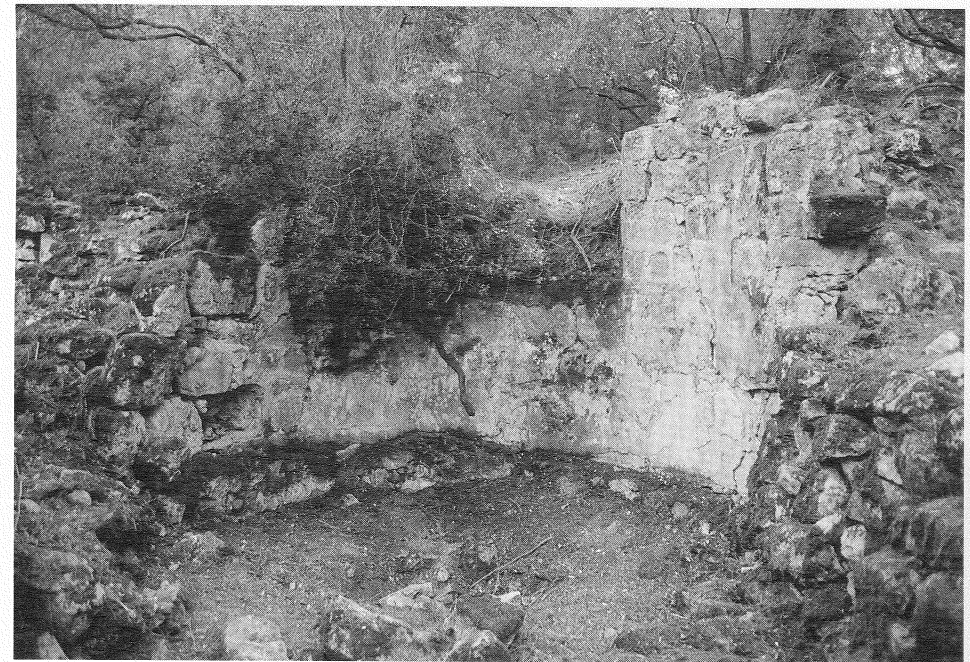


Fig. 83. Mustafa Basilica. Apse.



Fig. 84. Mustafa Basilica. Apse.