



Title	Impact of coronary collaterals on in-hospital and 5-year mortality after ST-elevation myocardial infarction in the contemporary percutaneous coronary intervention era: a prospective observational study
Author(s)	Hara, Masahiko; Sakata, Yasuhiko; Nakatani, Daisaku et al.
Citation	BMJ open. 2016, 6(7), p. e011105
Version Type	VoR
URL	<a href="https://hdl.handle.net/11094/78403">https://hdl.handle.net/11094/78403</a>
rights	© 2016 BMJ Publishing Group Ltd. This article is licensed under a Creative Commons Attribution-NonCommercial 4.0 International License.
Note	

*The University of Osaka Institutional Knowledge Archive : OUKA*

<https://ir.library.osaka-u.ac.jp/>

The University of Osaka

# BMJ Open Impact of coronary collaterals on in-hospital and 5-year mortality after ST-elevation myocardial infarction in the contemporary percutaneous coronary intervention era: a prospective observational study

Masahiko Hara,<sup>1,2</sup> Yasuhiko Sakata,<sup>3</sup> Daisaku Nakatani,<sup>4</sup> Shinichiro Suna,<sup>4</sup> Masami Nishino,<sup>5</sup> Hiroshi Sato,<sup>6</sup> Tetsuhisa Kitamura,<sup>7</sup> Shinsuke Nanto,<sup>8</sup> Masatsugu Hori,<sup>9</sup> Issei Komuro,<sup>10</sup> on behalf of the OACIS Investigators

**To cite:** Hara M, Sakata Y, Nakatani D, *et al.* Impact of coronary collaterals on in-hospital and 5-year mortality after ST-elevation myocardial infarction in the contemporary percutaneous coronary intervention era: a prospective observational study. *BMJ Open* 2016;**6**: e011105. doi:10.1136/bmjopen-2016-011105

► Prepublication history and additional material is available. To view please visit the journal (<http://dx.doi.org/10.1136/bmjopen-2016-011105>).

Received 10 January 2016  
Revised 9 April 2016  
Accepted 18 April 2016



CrossMark

For numbered affiliations see end of article.

## Correspondence to

Dr Yasuhiko Sakata;  
sakatayk@cardio.med.tohoku.ac.jp

## ABSTRACT

**Objectives:** To evaluate the short-term and long-term prognostic impacts of acute phase coronary collaterals to occluded infarct-related arteries (IRA) after ST-elevation myocardial infarction (STEMI) in the percutaneous coronary intervention (PCI) era.

**Design:** A prospective observational study.

**Setting:** Osaka Acute Coronary Insufficiency Study (OACIS) in Japan.

**Participants:** 3340 patients with STEMI from the OACIS database who were admitted to hospitals within 24 hours from the onset and who had a completely occluded IRA.

**Interventions:** Patients were divided into 4 groups according to the Rentrop collateral score (RCS) by angiography on admission (RCS-0, no visible collaterals; RCS-1, collaterals without IRA filling; RCS-2, collaterals with partial IRA filling; and RCS-3, collaterals with complete IRA filling).

**Primary outcome measures:** In-hospital and 5-year mortality.

**Results:** Patients with RCS-0/3 were older than patients with RCS-1/2, and the prevalence of previous myocardial infarction was highest in patients with RCS-3. Median peak creatinine phosphokinase levels decreased as RCS increases ( $p<0.001$ ), suggesting the acute cardioprotective effects of collaterals. Although RCS-1 and RCS-2 collaterals were associated with better in-hospital mortality (adjusted OR 0.48,  $p=0.046$  and 0.38,  $p=0.010$  for RCS-1 and RCS-2, respectively) and 5-year mortality (adjusted HR 0.53,  $p=0.004$  and 0.46,  $p<0.001$  for RCS-1 and RCS-2, respectively) as compared with RCS-0, presence of RCS-3 collaterals was not associated with improved in-hospital (adjusted OR 1.35,  $p=0.331$ ) and 5-year mortality (adjusted HR 0.98,  $p=0.920$ ), possibly because worse clinical profiles in patients with RCS-3 may mask mortality benefit of coronary collaterals.

**Conclusions:** Presence of acute phase coronary collaterals such as RCS-1 and RCS-2 were associated

## Strengths and limitations of this study

- Our study has one of the largest study populations published until now, which allowed us to evaluate the impact of coronary collaterals among four Rentrop collateral categories.
- We evaluated the impact of coronary collaterals on both in-hospital and 5-year mortality.
- There may be a selection bias because we only focused on patients who visited hospitals within 24 hours from the onset and who underwent emergent coronary angiography, and it is not clear whether identical conclusions can be drawn for all patients with ST-elevation myocardial infarction.

with better in-hospital and 5-year mortality after STEMI in the contemporary PCI era.

## INTRODUCTION

Coronary collaterals provide an alternative source of blood supply to the ischaemic myocardium.<sup>1–3</sup> In patients with acute myocardial infarction (AMI), collaterals to the infarct-related arteries (IRA) are angiographically observed in ~40%,<sup>4</sup> providing myocardial protective effects such as improved functional recovery,<sup>5</sup> infarct size reduction,<sup>6,7</sup> prevention of no-reflow phenomenon<sup>8</sup> or prevention of ventricular aneurysm formation.<sup>9</sup> Furthermore, coronary collaterals that develop after the convalescent stage of AMI were associated with prevention of subsequent ventricular remodelling.<sup>10</sup> However, some controversies have arisen regarding the long-term beneficial impacts of coronary

collaterals in patients with AMI in the contemporary percutaneous coronary intervention (PCI) era.<sup>11–18</sup> Recently, many large-scale studies and their meta-analysis revealed no association between coronary collaterals and long-term mortality after AMI.<sup>13–17</sup> One of the possible reasons for this discrepancy is that the definition of significant collaterals differed among the studies. For example, minimal collaterals such as Rentrop grade 1 collaterals were sometimes classified as non-significant collaterals. In addition, several studies did not exclude patients with patent IRA. In such studies, interpretation of the results were complicated and difficult because antegrade flow of IRA was likely to have counteracted with coronary collateral flow resulting in underestimation of collateral flow grades.<sup>13–17</sup> Thus, comprehensive analyses in a large-scale cohort are now warranted so that investigators can evaluate the cardioprotective impacts of coronary collaterals in detail by selecting patients with completely occluded IRA.

In the present study, we sought to investigate the impacts of acute phase coronary collaterals on in-hospital and 5-year mortality enrolling 3340 patients with ST-elevation myocardial infarction (STEMI) with completely occluded IRA from the database of the Osaka Acute Coronary Insufficiency Study (OACIS), a prospective multicentre observational registry of patients with AMI in Japan.<sup>4 19</sup>

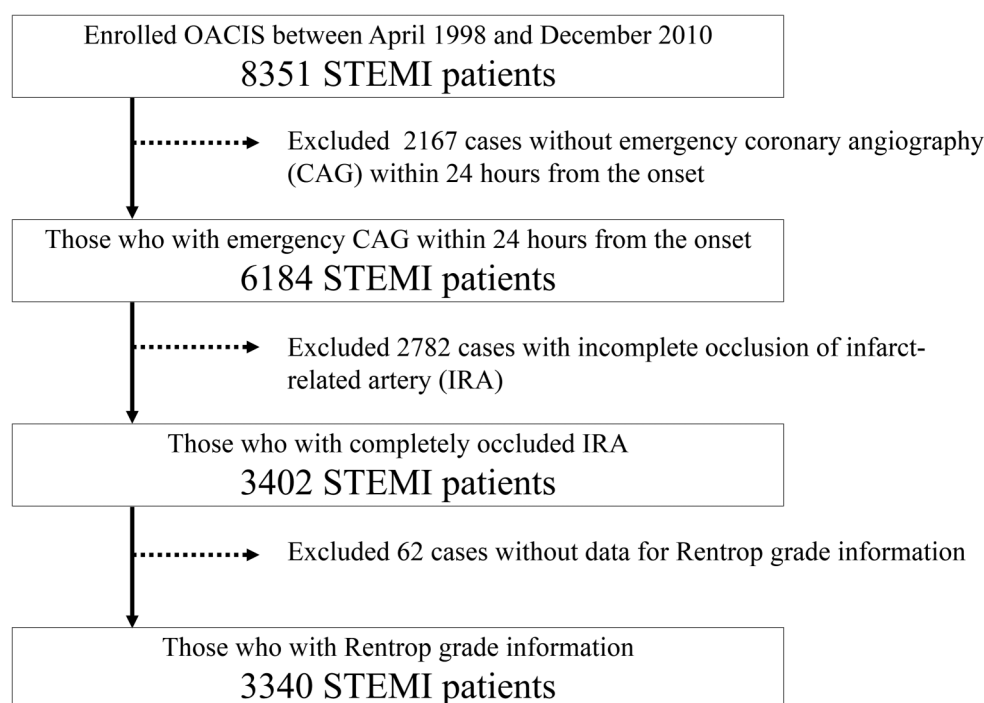
## METHODS

### Study population

We used the OACIS database to investigate the prognostic impacts of acute phase coronary collaterals after

STEMI. The OACIS is a prospective, multicentre observational study designed to collect and analyse demographic, procedural and outcome data in patients with AMI at 25 collaborating hospitals with cardiac emergency units. All the study participants were informed about data collection, blood sampling and genotyping, and provided written informed consent. The diagnosis of AMI was made on the basis of the WHO criteria, which required at least two of the following three criteria to be met: (1) clinical history of central chest pressure, pain or tightness lasting >30 min; (2) ST segment elevation >0.1 mV in at least one standard and (3) a rise in serum creatinine phosphokinase concentration to more than twice the normal laboratory value. All the collaborating hospitals were encouraged to enrol consecutive patients with AMI. We prospectively collected data by research cardiologists and trained research nurses using a specific reporting form, and the variables presented in Tables were extracted from the OACIS registry database in this study. The OACIS started in April 1998, and there were 8351 patients with STEMI as possible candidates for this study during the study period (figure 1). It is registered with the University Hospital Medical Information Network Clinical Trials Registry (UMIN-CTR) in Japan (ID: UMIN000004575), and details are described elsewhere.<sup>4 19</sup>

This study included 3340 consecutive patients with STEMI who were registered with the OACIS between 1998 and 2010 and fulfilled the following criteria: (1) who underwent emergency coronary angiography within 24 hours after the onset, (2) complete occlusion of the IRA which means thrombolysis in myocardial infarction



**Figure 1** Patient selection flow. OACIS, Osaka Acute Coronary Insufficiency Study and STEMI, ST-elevation myocardial infarction.

**Table 1** Patient background

Parameter	Overall (n=3340)	RCS-0 (n=2040)	RCS-1 (n=530)	RCS-2 (n=522)	RCS-3 (n=248)	p Value
Age, years	65 (57–73)	66 (57–74)	64 (55–71)	63 (55–71)	66 (57–74)	<0.001
Male, %	76.9	75.8	80.0	77.6	78.2	0.197
Onset to admission, hour	2.4 (1.1–5.5)	2.3 (1.0–5.0)	2.3 (1.2–5.5)	3.0 (1.5–6.7)	3.0 (1.3–7.4)	<0.001
Coronary risk factor						
Diabetes, %	31.6	31.0	31.7	32.3	34.6	0.705
Hypertension, %	58.1	59.1	58.4	53.5	59.5	0.147
Dyslipidaemia, %	44.2	40.8	50.4	47.6	52.1	<0.001
Smoking, %	65.3	63.7	68.7	70.4	59.8	0.003
Previous MI, %	11.0	10.0	9.2	14.3	16.3	<0.001
Angina pectoris, %	20.7	17.6	22.8	25.9	31.1	<0.001
KILLIP classification						0.113
Class 1	82.0	80.9	83.2	84.8	82.8	
Class 2	9.3	9.4	10.6	8.0	8.0	
Class 3	2.5	2.4	2.1	2.9	2.5	
Class 4	6.2	7.2	4.1	4.3	6.7	
Laboratory data						
Peak CPK, IU/L	2957 (1637–5030)	3225 (1722–5390)	3074 (1895–4915)	2514 (1449–4218)	2277 (1093–4180)	<0.001
CAG findings						
Culprit vessel						<0.001
Left main trunk, %	1.8	1.7	1.3	1.9	3.3	
LAD, %	44.0	42.7	48.3	45.2	42.7	
Diagonal branch, %	2.4	3.1	1.0	1.2	2.8	
RCA, %	41.5	40.1	43.5	44.8	41.9	
LCx, %	10.2	12.4	5.5	6.7	9.3	
Graft, %	0.1	0.0	0.4	0.2	0.0	
Multivessel disease, %	35.1	34.3	29.5	35.6	53.7	<0.001
Emergency PCI, %	96.8	96.4	98.5	97.5	95.6	0.042
Final TIMI 3, %	85.8	84.9	85.4	87.8	89.6	0.127
CABG, %	1.7	1.6	1.2	1.7	3.7	0.064
Medication at discharge						
ACEI, %	55.3	53.5	56.8	62.4	50.9	0.002
ARB, %	23.8	24.1	25.8	18.7	27.7	0.016
$\beta$ -Blocker, %	48.7	49.0	50.3	45.0	51.3	0.271
Ca-blocker, %	16.8	17.9	15.0	15.3	15.6	0.297
Statin, %	41.8	40.9	42.0	42.0	47.3	0.334
Diuretics, %	29.0	29.7	28.8	26.9	28.6	0.664

Categorical variables are presented as percentage and continuous variables are presented as the median (25–75 percentiles).

ACEI, ACE inhibitor; ARB, angiotensin receptor blocker; CABG, coronary artery bypass graft; CAG, coronary angiography; CPK, creatine kinase; LAD, left anterior descending artery; LCx, left circumflex artery; PCI, percutaneous coronary intervention; RCA, right coronary artery; TIMI, thrombolysis in myocardial infarction.

**Table 2** Predictors of development of collaterals

	Univariable		Multivariable (stepwise)	
	OR (95% CI)	p Value	adjusted OR (95% CI)	p Value
Age, per 10 years	0.87 (0.82 to 0.92)	<0.001	0.85 (0.79 to 0.91)	<0.001
Male, %	1.18 (0.99 to 1.40)	0.052	—	—
Onset to admission, hour	1.03 (1.02 to 1.04)	<0.001	1.04 (1.02 to 1.05)	<0.001
Coronary risk factor				
Diabetes	1.07 (0.92 to 1.24)	0.390	—	—
Hypertension	0.91 (0.78 to 1.05)	0.174	0.87 (0.74 to 1.02)	0.081
Dyslipidaemia	1.43 (1.24 to 1.65)	<0.001	1.31 (1.12 to 1.53)	<0.001
Smoking	1.19 (1.03 to 1.38)	0.020	—	—
Previous MI	1.30 (1.04 to 1.62)	0.021	1.20 (0.93 to 1.54)	0.155
Angina pectoris	1.61 (1.36 to 1.91)	<0.001	1.61 (1.34 to 1.94)	<0.001
Culprit vessel				
LCx	1	reference	1	reference
LAD	1.99 (1.53 to 2.60)	<0.001	2.18 (1.64 to 2.92)	<0.001
RCA	2.01 (1.55 to 2.64)	<0.001	2.14 (1.61 to 2.87)	<0.001
Other	1.36 (0.88 to 2.08)	0.158	1.58 (0.98 to 2.52)	0.059
Multivessel disease	1.11 (0.95 to 1.28)	0.179	1.15 (0.97 to 1.35)	0.103

Collaterals were divided into 2 variables (absent=RCS 0 or present=RCS 1–3).

Multivariable model was selected with stepwise method based on Akaike Information Criteria. Same results were obtained with decrease/increase and increase/decrease stepwise models.

LAD, left anterior descending artery; LCx, left circumflex artery; RCA, right coronary artery.

**Table 3** Impact of coronary collaterals on in-hospital mortality

All study population (n=3340)			
	OR	95% CI	p Value
Univariable			
Rentrop 0	1	—	reference
Rentrop 1	0.54	0.33 to 0.82	0.006
Rentrop 2	0.47	0.28 to 0.74	0.002
Rentrop 3	1.27	0.79 to 1.95	0.303
Multivariable			
Rentrop 0	1	—	reference
Rentrop 1	0.48	0.22 to 0.94	0.046
Rentrop 2	0.38	0.17 to 0.76	0.010
Rentrop 3	1.35	0.72 to 2.40	0.331
Single vessel disease without previous myocardial infarction (n=1880)			
	OR	95% CI	p Value
Univariable			
Rentrop 0	1	—	reference
Rentrop 1	0.59	0.28 to 1.12	0.131
Rentrop 2	0.33	0.11 to 0.76	0.019
Rentrop 3	0.20	0.03 to 1.49	0.118
Multivariable			
Rentrop 0	1	—	reference
Rentrop 1	0.60	0.20 to 1.5	0.318
Rentrop 2	0.29	0.05 to 1.03	0.104
Rentrop 3	<0.01	<0.01 to >10.0	0.987

Impact of coronary collaterals on in-hospital mortality was estimated by univariable and multivariable logistic regression analysis with Rentrop 0 serving as a reference. Age, gender, onset to admission time, coronary risk factors (diabetes, hypertension, dyslipidaemia, smoking, previous myocardial infarction and angina pectoris), culprit vessel, multivessel disease and emergency percutaneous coronary intervention were used as covariates in a multivariable model.

(TIMI) flow grade 0, and (3) angiographic collateral flow was evaluated using the Rentrop collateral score (RCS) (figure 1).<sup>20 21</sup> That is, RCS-0 indicates no visible coronary collaterals; RCS-1, coronary collaterals without IRA filling; RCS-2, coronary collaterals with partial IRA filling; and RCS-3, collaterals with complete IRA filling.<sup>21</sup>

The authors had full access to the data and take responsibility for their integrity. All authors have read and agree to the manuscript as written.

### Statistical analysis

Categorical variables were compared by the  $\chi^2$  test, and continuous variables were compared by the Kruskal-Wallis test. The impacts of coronary collaterals on in-hospital and 5-year mortality were assessed as ORs and their 95% CIs with a logistic regression analysis, and HRs and 95% CI with Cox regression analysis, respectively. To reduce the confounding effects of variations in patient backgrounds, multivariable analyses were employed where covariates were described in the footnote of each table. The Kaplan-Meier method was used to estimate event rates, and the differences between RCS grades were assessed by the log-rank tests. To exclude the influence of stenosis of the supply artery and evaluate the impacts of coronary collaterals appropriately, the impacts of in-hospital and 5-year mortality were also evaluated in patients with single vessel disease of the main coronary arteries (left anterior descending, left circumflex and right coronary arteries) without previous MI as a subgroup analysis. Predictors of development of collaterals were assessed using univariable and multivariable logistic regression analysis. Missing data were not complemented, and patients with missing data were



automatically excluded in the multivariable analyses. Statistical significance was set as  $p < 0.05$ . All statistical analyses were performed using R software packages V.3.2.1 for Mac (R Development Core Team).

## RESULTS

### Baseline characteristics and determinants of collaterals

Patient characteristics, number of missing data and predictors of coronary collaterals are summarised in table 1, online supplementary table S1 and table 2, respectively. In general, patient backgrounds were significantly different among RCS grades in age, onset to admission hour, dyslipidaemia, previous MI, angina pectoris, culprit vessel, multivessel disease, emergency PCI, prescription rate of ACE inhibitors at discharge and angiotensin receptor blocker. In addition, median peak creatinine phosphokinase levels decreased as RCS increases (table 1).

Multivariable logistic regression analysis revealed that younger age, longer time from the onset to admission, dyslipidaemia, history of angina pectoris, left anterior descending artery, right coronary artery and presence of multivessel disease were associated with presence of collaterals in this study (table 2).

### Impacts of coronary collaterals on in-hospital mortality

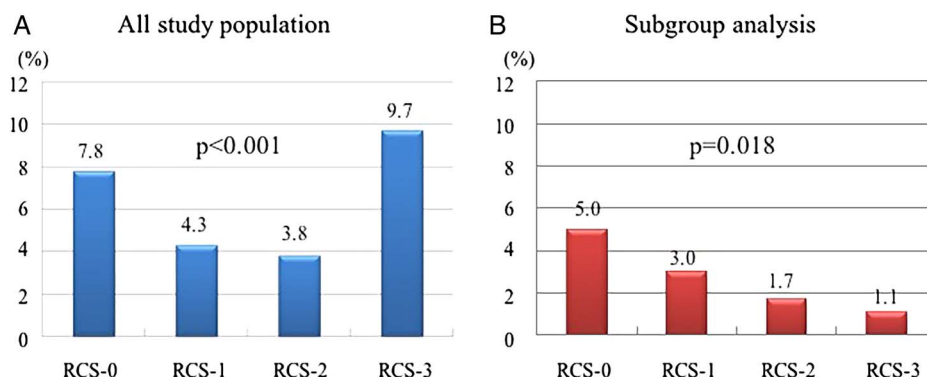
As shown in table 3, figure 2 and online supplementary figure S1, in-hospital mortalities were significantly lower

in the RCS-1 and RCS-2 groups than in the RCS-0 group, whereas it was higher in the RCS-3 group than in the RCS-0 group. However, if we analyse the data only in patients with single vessel disease without previous MI, in-hospital mortality decreases as RCS grade increases ( $p = 0.018$ ). In multivariable logistic regression analysis, adjusted OR for in-hospital mortality were 0.48 (95% CI 0.22 to 0.94,  $p = 0.046$ ), 0.38 (0.17 to 0.76,  $p = 0.010$ ) and 1.35 (0.72 to 2.40,  $p = 0.331$ ) in the RCS-1, RCS-2 and RCS-3 groups, respectively.

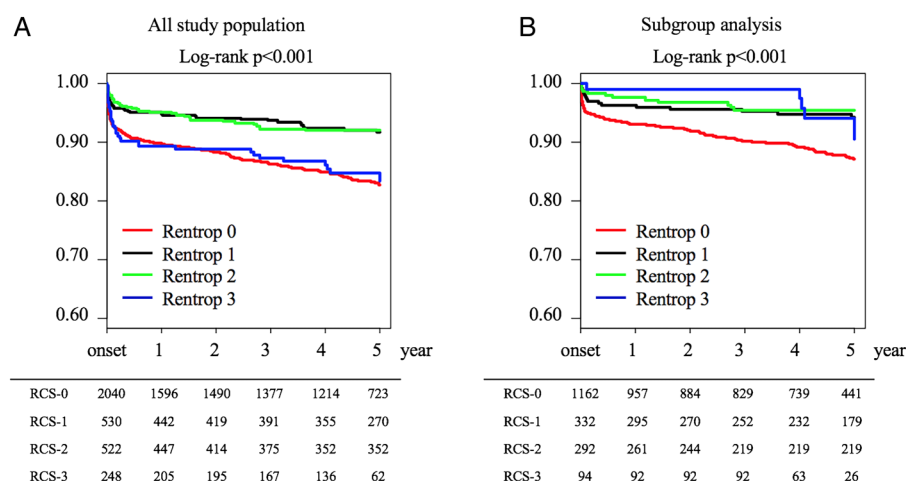
### Impacts of coronary collaterals on 5-year mortality

During a median follow-up duration of 1691 days (quartile 714–1824) from STEMI onset, 418 events occurred (306 in RCS-0, 39 in RCS-1, 38 in RCS-2 and 35 in RCS-3). Kaplan-Meier survival estimates are shown in figure 3. Patients with RCS-1 and RCS-2 collaterals showed significantly better 5-year survival than patients without coronary collaterals (RCS-0) or patients with RCS-3 collaterals ( $p < 0.001$ ). On the other hand, in a subgroup analysis, RCS-3 collaterals seemed to be associated with better survival in patients with single vessel disease without previous MI. In multivariable Cox regression analysis, adjusted HR for 5-year mortality were 0.53 (95% CI 0.34 to 0.82,  $p = 0.004$ ), 0.46 (0.30 to 0.70,  $p < 0.001$ ) and 0.98 (0.65 to 1.48,  $p = 0.920$ ) in the RCS-1, RCS-2 and RCS-3 groups, respectively (table 4). These

**Figure 2** In-hospital mortality in (A) an all study population and (B) a subgroup of single vessel disease of main coronary arteries without previous myocardial infarction. RCS, Rentrop collateral score.



**Figure 3** Kaplan-Meier survival estimates in (A) an all study population and (B) a subgroup of single vessel disease of main coronary arteries without previous myocardial infarction. Numbers at risk are summarised below the figure. RCS, Rentrop collateral score.



**Table 4** Impact of coronary collaterals on 5-year mortality**All study population (n=3340)**

	HR	95% CI	p Value
Univariable			
Rentrop 0	1	–	reference
Rentrop 1	0.47	0.34 to 0.66	<0.001
Rentrop 2	0.46	0.33 to 0.64	<0.001
Rentrop 3	0.94	0.66 to 1.33	0.714
Multivariable			
Rentrop 0	1	–	reference
Rentrop 1	0.53	0.34 to 0.82	0.004
Rentrop 2	0.46	0.30 to 0.70	<0.001
Rentrop 3	0.98	0.65 to 1.48	0.920

**Single vessel disease without previous myocardial infarction (n=1880)**

	HR	95% CI	p Value
Univariable			
Rentrop 0	1	–	reference
Rentrop 1	0.45	0.27 to 0.74	0.002
Rentrop 2	0.35	0.20 to 0.64	<0.001
Rentrop 3	0.45	0.18 to 1.09	0.077
Multivariable			
Rentrop 0	1	–	reference
Rentrop 1	0.49	0.26 to 0.91	0.025
Rentrop 2	0.37	0.17 to 0.80	0.011
Rentrop 3	0.56	0.21 to 1.55	0.267

Impact of coronary collaterals on 5-year mortality was estimated by univariable and multivariable Cox regression analysis with Rentrop 0 serving as a reference. Age, gender, coronary risk factors (diabetes, hypertension, dyslipidaemia, smoking, previous myocardial infarction and angina pectoris), culprit vessel, multivessel disease, emergency percutaneous coronary intervention, ACE inhibitors, angiotensin receptor blocker,  $\beta$ -blocker, calcium-blocker, statin and diuretic usage were used as covariates in a multivariable model.

trends were also suggested in all subgroups with exceptions in female patients and patients with single vessel disease where RCS-3 tended to impact favourably on 5-year mortality as compared to other subgroups (figure 4).

## DISCUSSION

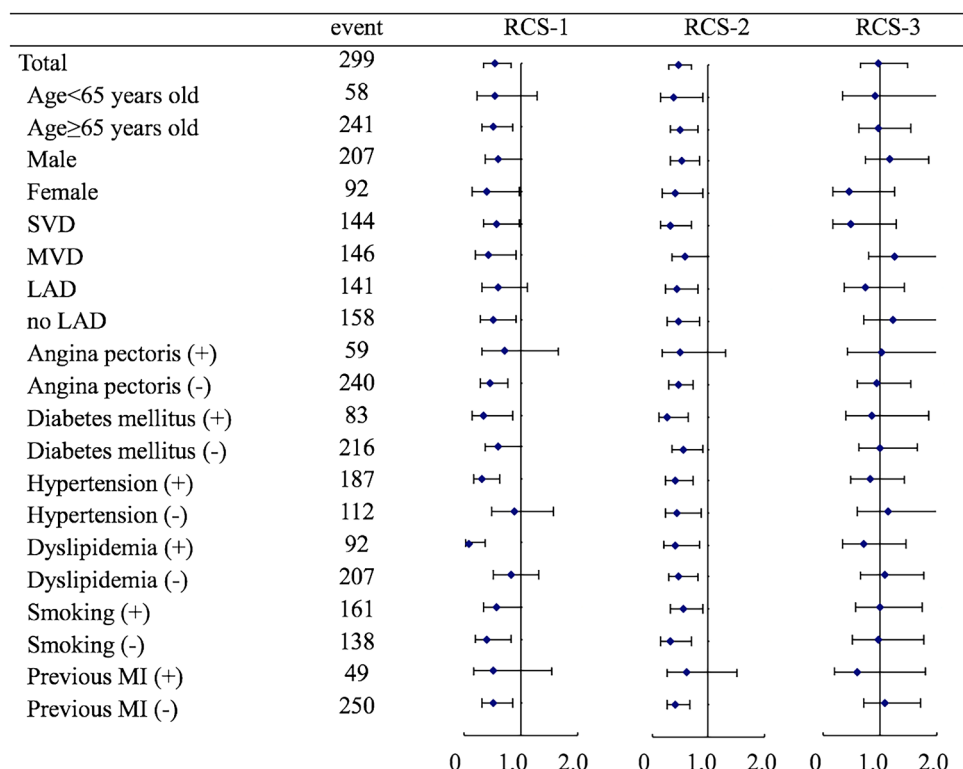
In this study, we investigated the impacts of acute phase coronary collaterals on in-hospital and long-term (5-year) mortality after STEMI in the contemporary PCI era enrolling 3340 patients with an occluded IRA. This study is one of the largest studies investigating the prognostic impacts of coronary collaterals published until now.<sup>16</sup> We revealed that RCS-1 and RCS-2 collaterals were associated with better in-hospital mortality (adjusted OR of RCS-1 is 0.48 with  $p=0.046$ , and RCS-2 is 0.38 with  $p=0.010$ ) and 5-year mortality (adjusted HR of RCS-1 is 0.53 with  $p=0.004$ , and RCS-2 is 0.46 with  $p<0.001$ ) as compared with RCS-0, whereas presence of RCS-3 collaterals were not associated with improved in-hospital ( $p=0.331$ ) and 5-year mortality ( $p=0.920$ ). Since subgroup analysis of single vessel disease without the previous MI population showed that in-hospital

mortality and 5-year mortality tend to decrease as RCS grade increases (figures 2 and 3), we hypothesised that the cardioprotective impact of coronary collaterals would increase along with an increments of angiographical collateral filling (RCS-0 to RCS-3), but that worse clinical profiles in patients with RCS-3 may have masked the mortality benefit of coronary collaterals (table 1).

Our results of the acute phase cardioprotective effect and determinants of the presence of coronary collaterals were consistent with previously published data. For example median peak creatinine phosphokinase levels decreased as RCS increases ( $p<0.001$ ) in this study, suggesting the acute cardioprotective effects of acute phase coronary collaterals (table 1).<sup>6 7 12</sup> In fact, in-hospital mortality decreases as RCS grade increases in patients with single vessel disease without previous MI. This is consistent with the previously published data which suggested the association between presence of coronary collaterals and lower in-hospital mortality.<sup>11</sup> Determinants of the presence of coronary collaterals in this study were younger age, longer time from the onset to admission, clinical history of angina pectoris, culprit vessel and presence of multivessel disease, which were also consistent with the previously published data.<sup>1 4 11 13 14</sup>

Furthermore, we believe that our data gave us new insights into the impacts of acute phase coronary collaterals in patients with STEMI. First, the presence of angiographically minimal coronary collaterals, defined as RCS-1, was even associated with better in-hospital and 5-year mortalities as compared with the absence of coronary collaterals (RCS-0). Thus, it is suggested that classifying patients with RCS-0 and RCS-1 together as a non-significant collateral group was inappropriate to assess the impacts of coronary collaterals, although many previous studies have investigated impacts of coronary collaterals thus.<sup>12 14 16</sup> The second important finding of our study was that angiographically significant coronary collaterals (RCS-3) were not associated with better in-hospital and 5-year mortalities in the overall study population. However, since subgroup analysis of single vessel disease without previous MI revealed that RCS-3 was associated with the lowest in-hospital mortality and better 5-year mortality (figures 2B and 3B), it is conceivable that worse clinical profiles in patients with RCS-3 masked the mortality benefit of RCS-3 coronary collaterals. Thus, our observations clearly demonstrated that impacts of RCS-0, RCS-1, RCS-2 and RCS-3 should be evaluated separately to accurately assess the prognostic impacts of coronary collaterals, under the consideration of the patient's clinical background.

Recently, therapeutic promotion of coronary collateral growth is considered as a valuable treatment strategy for ischaemic heart disease and potential benefits of this therapy have been intensively investigated.<sup>22–24</sup> The rationale of this approach is mainly based on the short-term beneficial impact of coronary collaterals.<sup>22 23</sup> In addition to this, our study also suggested the long-term benefits of coronary collaterals in patients with STEMI,



**Figure 4** Subgroup analysis for 5-year mortality adjusted HR of each Rentrop collateral score as compared with no collaterals. LAD, left anterior descending artery; MI, myocardial infarction; MVD, multivessel disease; RCA, right coronary artery; RCS, Rentrop collateral score; and SVD, single vessel disease of main coronary arteries.

which are consistent with the recent evidence demonstrating the long-term favourable impact of coronary collaterals in stable coronary artery disease.<sup>16 25</sup> Thus, we believe that our result may make the clinical implication such as therapeutic angiogenesis more anticipating.

### Study limitations

There are several limitations that warrant mention. First, this study included only patients who were able to visit hospitals within 24 hours after STEMI onset, and who could undergo emergent coronary angiography which revealed complete occlusion of IRA (TIMI grade 0); therefore, there could be a selection bias in this study and it is not clear whether identical conclusions can be drawn for all patients with STEMI. However, we speculated that this process made it possible to assess the impact of coronary collaterals more accurately than enrolling all study population. Second, the study end point was set as all-cause mortality and one-third causes of all death events were not clearly determined. Third, collateral functionalities were not assessed with flow wires because that was not a prespecified purpose of the OACIS registry. These might lead to biased results. Thus, caution is required in interpretation of our results.

### CONCLUSIONS

Presence of acute phase coronary collaterals was associated with better in-hospital and 5-year mortality after STEMI in the contemporary PCI era, if its angiographical

coronary filling was minimal or moderate. However, it should be underlined that patients with angiographically significant collaterals (RCS-3) were characterised by worse baseline clinical backgrounds, and thus not necessarily associated with better survival. The benefit of acute phase coronary collaterals should be evaluated in combination with patient clinical backgrounds.

### Author affiliations

- <sup>1</sup>Department of Clinical Epidemiology and Biostatistics, Osaka University Graduate School of Medicine, Suita, Japan
- <sup>2</sup>Department of Medical Innovation, Osaka University Hospital, Suita, Japan
- <sup>3</sup>Department of Cardiovascular Medicine, Tohoku University Graduate School of Medicine, Sendai, Japan
- <sup>4</sup>Department of Cardiovascular Medicine, Osaka University Graduate School of Medicine, Suita, Japan
- <sup>5</sup>Division of Cardiology, Osaka Rosai Hospital, Sakai, Japan
- <sup>6</sup>School of Human Welfare Studies, Kwansei Gakuin University, Nishinomiya, Japan
- <sup>7</sup>Division of Environmental Medicine and Population Sciences, Department of Social and Environmental Medicine, Osaka University Graduate School of Medicine, Suita, Japan
- <sup>8</sup>Department of Advanced Cardiovascular Therapeutics, Osaka University Graduate School of Medicine, Suita, Japan
- <sup>9</sup>Osaka Prefectural Hospital Organization Osaka Medical Center for Cancer and Cardiovascular Diseases, Osaka, Japan
- <sup>10</sup>Department of Cardiovascular Medicine, The University of Tokyo Graduate School of Medicine, Tokyo, Japan

**Collaborators** The OACIS Investigators (institutions listed in alphabetical order) Yoshiyuki Kijima; Yusuke Nakagawa; Minoru Ichikawa, Higashi-Osaka City General Hospital, Higashi-Osaka; Young-Jae Lim; Shigeo Kawano; Hideyuki Nanmori, Kawachi General Hospital, Higashi-Osaka; Hiroshi Sato, Kwansei Gakuin University, Nishinomiya; Takashi Shimazu; Hisakazu Fuji;



Kazuhiro Aoki, Kobe Ekisaikai Hospital, Kobe; Masaaki Uematsu; Yoshio Ishida; Tetsuya Watanabe; Masashi Fujita; Masaki Awata, Kansai Rosai Hospital, Amagasaki; Michio Sugii, Meiwa Hospital, Nishinomiya; Masatake Fukunami; Takahisa Yamada; Takashi Morita, Osaka General Medical Center, Osaka; Shinji Hasegawa; Nobuyuki Ogasawara, Osaka Kosei Nenkin Hospital, Osaka; Tatsuya Sasaki; Yoshinori Yasuoka; Kiyoshi Kume, Osaka Minami Medical Center, National Hospital Organization; Kawachinagano; Hideo Kusuoka; Yukihiro Koretsune; Yoshio Yasumura; Keiji Hirooka, Osaka Medical Center, National Hospital Organization, Osaka; Masatsugu Hori (previous Chair), Osaka Prefectural Hospital Organization Osaka Medical Center for Cancer and Cardiovascular Diseases, Osaka; Kazuhisa Kodama; Yasunori Ueda; Kazunori Kashiwase; Mayu Nishio, Osaka Police Hospital, Osaka; Yoshio Yamada; Jun Tanouchi; Masami Nishino; Hiroyasu Kato; Ryu Shutta, Osaka Rosai Hospital, Sakai; Shintaro Beppu; Hiroyoshi Yamamoto, Osaka Seamens Insurance Hospital, Osaka; Issei Komuro; Shinsuke Nanto; Yasushi Matsumura; Tetsuo Minamino; Satoru Sumitsuji; Yuji Okuyama; Yasuhiko Sakata; Shungo Hikoso; Daisaku Nakatani; Masahiro Kumada; Michihiro Takeda; Shinichiro Suna, Osaka University Graduate School of Medicine, Suita; Toru Hayashi; Yasuji Doi; Ken-ichiro Okada; Noritoshi Ito, Saiseikai Senri Hospital, Suita; Kenshi Fujii; Katsuomi Iwakura; Atsushi Okamura; Motoo Date; Yoshiharu Higuchi; Koji Inoue, Sakurabashi Watanabe Hospital, Osaka; Noriyuki Akehi, Settsu Iseikai Hospital, Settsu; Eiji Hishida, Teramoto Memorial Hospital; Kawachinagano; and Shiro Hoshida; Kazuhiko Hashimura; Takayoshi Adachi; Yukinori Shinoda, Yao Municipal Hospital, Yao, Japan.

**Contributors** MH, YS, DN, SS, MN, HS, TK, SN and IK were involved in the conception and design of the work. MH, YS, DN, SS, MN, HS, TK, SN and IK were involved in the acquisition, analysis or interpretation of data for the work. MH, YS and TK were involved in drafting the work or revising it critically for important intellectual content. YS was involved in final approval of the version to be published.

**Funding** This work was supported by Grants-in-Aid for University and Society Collaboration (number 19590816 and number 19390215) from the Japanese Ministry of Education, Culture, Sports, Science and Technology, Tokyo, Japan.

**Competing interests** IK has received research grants and speaker's fees from Takeda Pharmaceutical Company, Astellas Pharma, DAIICHI SANKYO COMPANY, Boehringer Ingelheim, Novartis Pharma and Shionogi. No other authors have relationships with industry to disclose or financial associations that might pose a conflict of interest in connection with the submitted article.

**Patient consent** Obtained.

**Ethics approval** The study protocol complied with the Helsinki Declaration. The study was approved by the institutional ethical committee of each participating institution.

**Provenance and peer review** Not commissioned; externally peer reviewed.

**Data sharing statement** No additional data are available.

**Open Access** This is an Open Access article distributed in accordance with the Creative Commons Attribution Non Commercial (CC BY-NC 4.0) license, which permits others to distribute, remix, adapt, build upon this work non-commercially, and license their derivative works on different terms, provided the original work is properly cited and the use is non-commercial. See: <http://creativecommons.org/licenses/by-nc/4.0/>

## REFERENCES

- Schwartz H, Leiboff RH, Bren GB, *et al.* Temporal evolution of the human coronary collateral circulation after myocardial infarction. *J Am Coll Cardiol* 1984;4:1088–93.
- Sakata Y, Kodama K, Adachi T, *et al.* Comparison of myocardial contrast echocardiography and coronary angiography for assessing the acute protective effects of collateral recruitment during occlusion of the left anterior descending coronary artery at the time of elective angioplasty. *Am J Cardiol* 1997;79:1329–33.
- Sakata Y, Kodama K, Kitakaze M, *et al.* Different mechanisms of ischemic adaptation to repeated coronary occlusion in patients with and without recruitable collateral circulation. *J Am Coll Cardiol* 1997;30:1679–86.
- Kurotobi T, Sato H, Kinjo K, *et al.* Reduced collateral circulation to the infarct-related artery in elderly patients with acute myocardial infarction. *J Am Coll Cardiol* 2004;44:28–34.
- Hirai T, Fujita M, Yoshida N, *et al.* Importance of ischemic preconditioning and collateral circulation for left ventricular functional recovery in patients with successful intracoronary thrombolysis for acute myocardial infarction. *Am Heart J* 1993;126:827–31.
- Habib GB, Heibig J, Forman SA, *et al.* Influence of coronary collateral vessels on myocardial infarct size in humans. Results of phase I thrombolysis in myocardial infarction (TIMI) trial. The TIMI Investigators. *Circulation* 1991;83:739–46.
- Christian TF, Schwartz RS, Gibbons RJ. Determinants of infarct size in reperfusion therapy for acute myocardial infarction. *Circulation* 1992;86:81–90.
- Lim YJ, Masuyama T, Mishima M, *et al.* Effect of pre-reperfusion residual flow on recovery from myocardial stunning: a myocardial contrast echocardiography study. *J Am Soc Echocardiogr* 2000;13:18–25.
- Hirai T, Fujita M, Nakajima H, *et al.* Importance of collateral circulation for prevention of left ventricular aneurysm formation in acute myocardial infarction. *Circulation* 1989;79:791–6.
- Kodama K, Kusuoka H, Sakai A, *et al.* Collateral channels that develop after an acute myocardial infarction prevent subsequent left ventricular dilation. *J Am Coll Cardiol* 1996;27:1133–9.
- Pérez-Castellano N, García EJ, Abeytua M, *et al.* Influence of collateral circulation on in-hospital death from anterior acute myocardial infarction. *J Am Coll Cardiol* 1998;31:512–18.
- Elsman P, van 't Hof AW, de Boer MJ, *et al.* Zwolle Myocardial Infarction Study Group. Role of collateral circulation in the acute phase of ST segment-elevation myocardial infarction treated with primary coronary intervention. *Eur Heart J* 2004;25:854–8.
- Antoniucci D, Valenti R, Moschi G, *et al.* Relation between preintervention angiographic evidence of coronary collateral circulation and clinical and angiographic outcomes after primary angioplasty or stenting for acute myocardial infarction. *Am J Cardiol* 2002;89:121–5.
- Sorajja P, Gersh BJ, Mehran R, *et al.* Impact of collateral flow on myocardial reperfusion and infarct size in patients undergoing primary angioplasty for acute myocardial infarction. *Am Heart J* 2007;154:379–84.
- Steg PG, Kerner A, Mancini GB, *et al.* Impact of collateral flow to the occluded infarct-related artery on clinical outcomes in patients with recent myocardial infarction: a report from the randomized occluded artery trial. *Circulation* 2010;121:2724–30.
- Meier P, Hemingway H, Lansky AJ, *et al.* The impact of the coronary collateral circulation on mortality: a meta-analysis. *Eur Heart J* 2012;33:614–21.
- Rechciński T, Jasińska A, Peruga JZ, *et al.* Presence of coronary collaterals in ST-elevation myocardial infarction patients does not affect long-term outcome. *Pol Arch Med Wewn* 2013;123:29–37.
- Desch S, de Waha S, Eitel I, *et al.* Effect of coronary collaterals on long-term prognosis in patients undergoing primary angioplasty for acute ST-elevation myocardial infarction. *Am J Cardiol* 2010;106:605–11.
- Hara M, Sakata Y, Nakatani D, *et al.* OACIS Investigators. Comparison of 5-year survival after acute myocardial infarction using angiotensin converting enzyme inhibitor versus angiotensin II receptor blocker. *Am J Cardiol* 2014;114:1–8.
- Chesebro JH, Knatterud G, Roberts R, *et al.* Thrombolysis in Myocardial Infarction (TIMI) Trial, Phase I: a comparison between intravenous tissue plasminogen activator and intravenous streptokinase. Clinical findings through hospital discharge. *Circulation* 1987;76:142–54.
- Rentrop KP, Cohen M, Blanke H, *et al.* Changes in collateral channel filling immediately after controlled coronary artery occlusion by an angioplasty balloon in human subjects. *J Am Coll Cardiol* 1985;5:587–92.
- Simons M, Ware JA. Therapeutic angiogenesis in cardiovascular disease. *Nat Rev Drug Discov* 2003;2:863–71.
- Meier P, Gloekler S, de Marchi SF, *et al.* Myocardial salvage through coronary collateral growth by granulocyte colony-stimulating factor in chronic coronary artery disease: a controlled randomized trial. *Circulation* 2009;120:1355–63.
- Seiler C, Stoller M, Pitt B, *et al.* The human coronary collateral circulation: development and clinical importance. *Eur Heart J* 2013;34:2674–82.
- Meier P, Gloekler S, Zbinden R, *et al.* Beneficial effect of recruitable collaterals: a 10-year follow-up study in patients with stable coronary artery disease undergoing quantitative collateral measurements. *Circulation* 2007;116:975–83.