

Title	Predicting the Debonding of CAD/CAM Composite Resin Crowns with AI
Author(s)	Yamaguchi, S.; Lee, C.; Karaer, O. et al.
Citation	Journal of Dental Research. 2019, 98(11), p. 1234-1238
Version Type	AM
URL	https://hdl.handle.net/11094/93083
rights	© International & American Associations for Dental Research 2019.
Note	

Osaka University Knowledge Archive : OUKA

<https://ir.library.osaka-u.ac.jp/>

Osaka University

Fig. 1

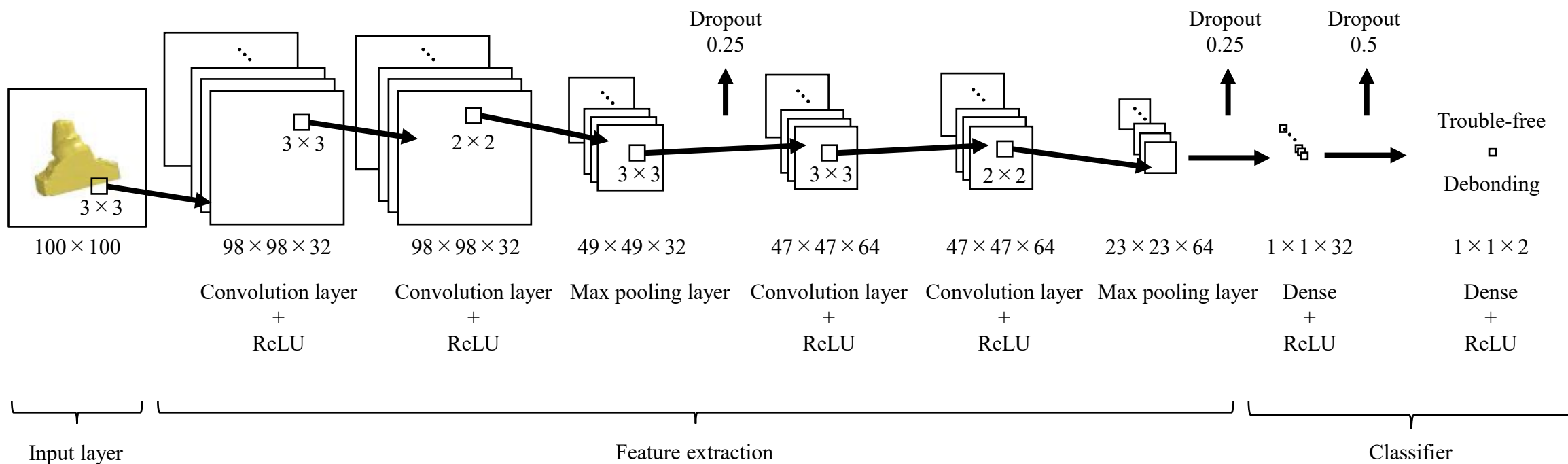


Fig. 2

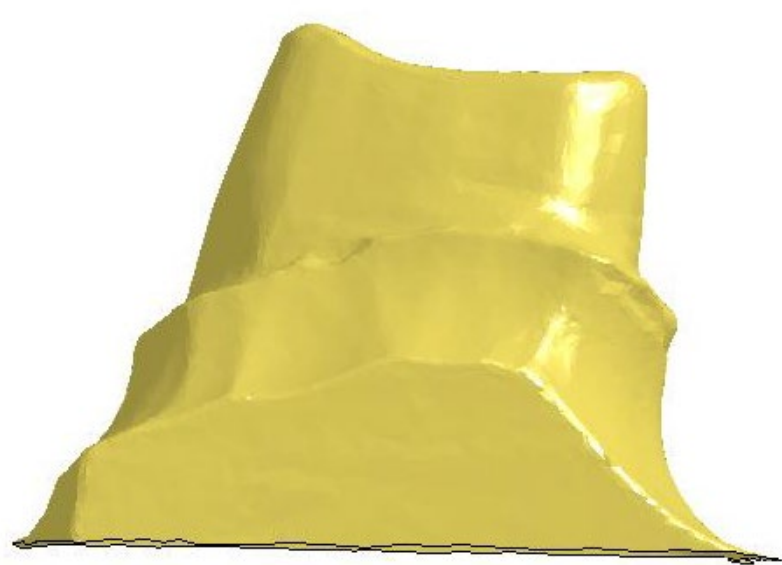


Fig. 3

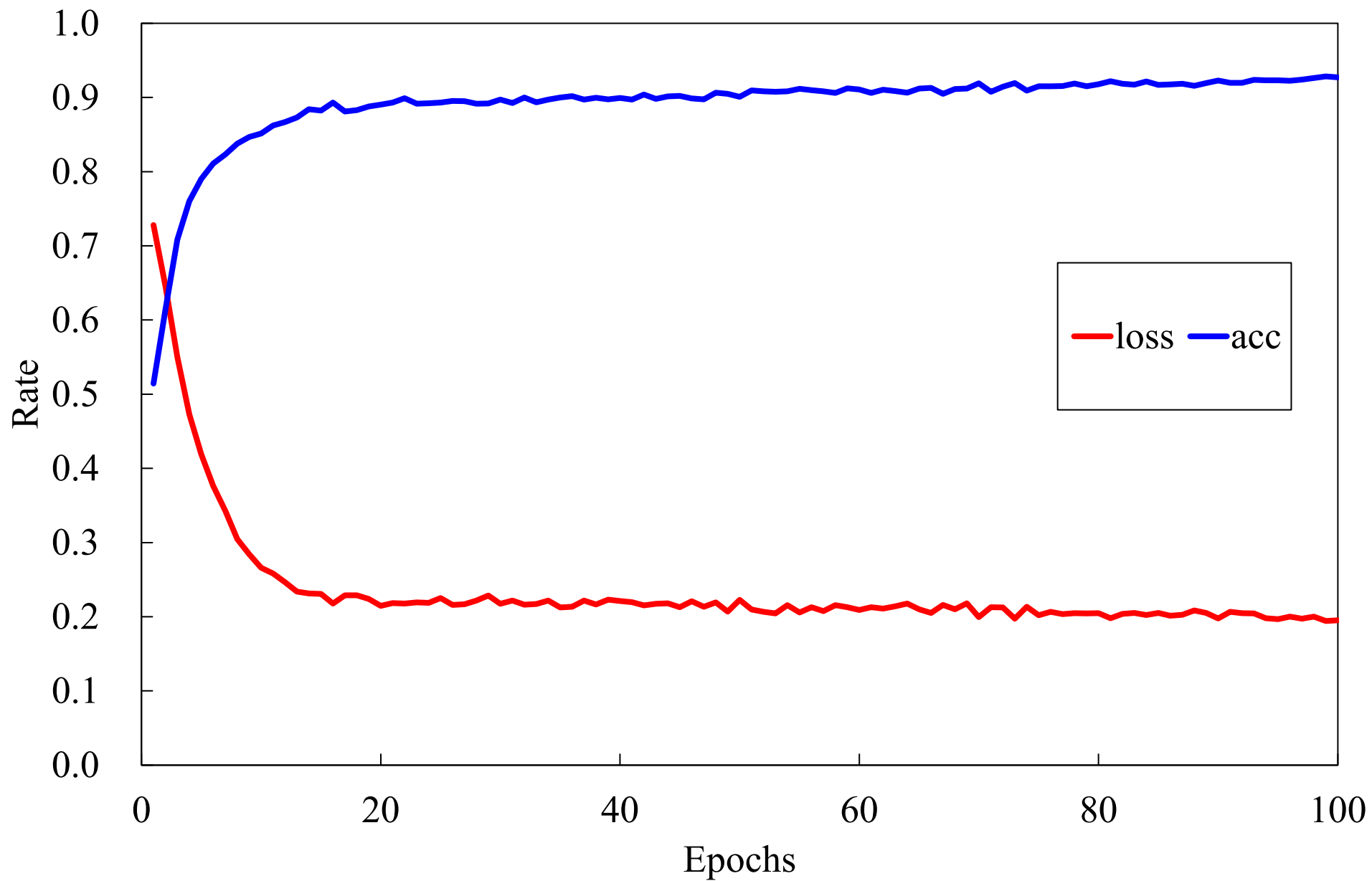


Fig. 4

