

Title	Positive and negative regulation of the Fc $\gamma$ receptor-stimulating activity of RNA-containing immune complexes by RNase
Author(s)	Naito, Ryota; Ohmura, Koichiro; Higuchi, Shuhei et al.
Citation	JCI Insight. 2023, 8(16), p. e167799
Version Type	VoR
URL	<a href="https://hdl.handle.net/11094/93235">https://hdl.handle.net/11094/93235</a>
rights	This article is licensed under a Creative Commons Attribution 4.0 International License.
Note	

***Osaka University Knowledge Archive : OUKA***

<https://ir.library.osaka-u.ac.jp/>

Osaka University

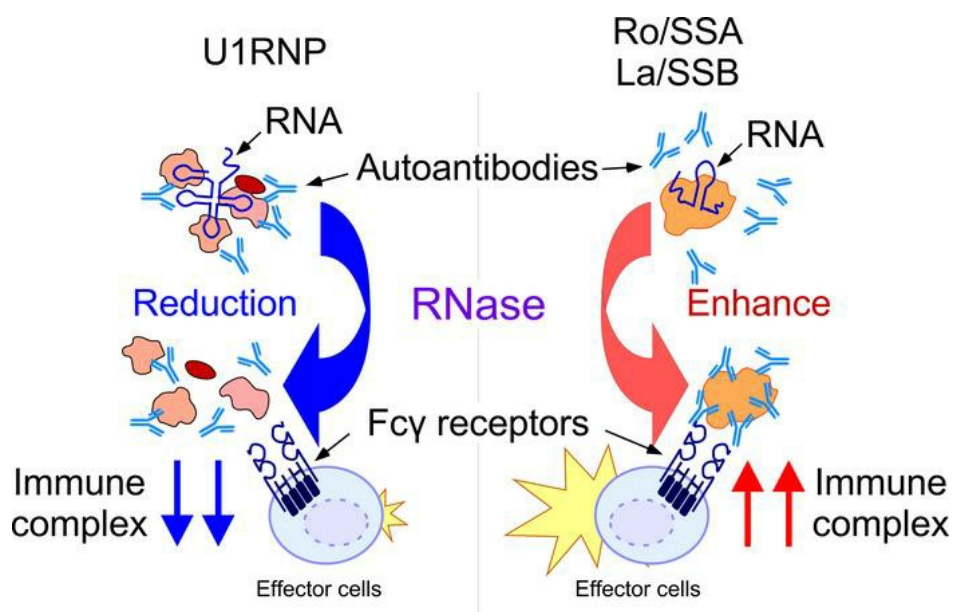
## Positive and negative regulation of the Fcγ receptor–stimulating activity of RNA-containing immune complexes by RNase

Ryota Naito, ... , Akio Morinobu, Hisashi Arase

*JCI Insight*. 2023;8(16):e167799. <https://doi.org/10.1172/jci.insight.167799>.

Research Article

### Graphical abstract



Find the latest version:

<https://jci.me/167799/pdf>



# Positive and negative regulation of the Fc $\gamma$ receptor–stimulating activity of RNA-containing immune complexes by RNase

Ryota Naito,<sup>1,2,3</sup> Koichiro Ohmura,<sup>1,4</sup> Shuhei Higuchi,<sup>2,3</sup> Wataru Nakai,<sup>2,3</sup> Masako Kohyama,<sup>2,3,5</sup> Tsuneyo Mimori,<sup>1</sup> Akio Morinobu,<sup>1</sup> and Hisashi Arase<sup>2,3,5,6</sup>

<sup>1</sup>Department of Rheumatology and Clinical Immunology, Kyoto University Graduate School of Medicine, Sakyo-ku, Kyoto, Japan. <sup>2</sup>Laboratory of Immunochemistry, World Premier International (WPI) Immunology Frontier Research Center, and <sup>3</sup>Department of Immunochemistry, Research Institute for Microbial Diseases, Osaka University, Osaka, Japan.

<sup>4</sup>Department of Rheumatology, Kobe City Medical Center General Hospital, Kobe, Japan. <sup>5</sup>Center for Infectious Diseases for Education and Research (CiDER), and <sup>6</sup>Center for Advanced Modalities and DDS (CAMaD), Osaka University, Osaka, Japan.

The U1RNP complex, Ro/SSA, and La/SSB are major RNA-containing autoantigens. Immune complexes (ICs) composed of RNA-containing autoantigens and autoantibodies are suspected to be involved in the pathogenesis of some systemic autoimmune diseases. Therefore, RNase treatment, which degrades RNA in ICs, has been tested in clinical trials as a potential therapeutic agent. However, no studies to our knowledge have specifically evaluated the effect of RNase treatment on the Fc $\gamma$  receptor–stimulating (Fc $\gamma$ R–stimulating) activity of RNA-containing ICs. In this study, using a reporter system that specifically detects Fc $\gamma$ R–stimulating capacity, we investigated the effect of RNase treatment on the Fc $\gamma$ R–stimulating activity of RNA-containing ICs composed of autoantigens and autoantibodies from patients with systemic autoimmune diseases such as systemic lupus erythematosus. We found that RNase enhanced the Fc $\gamma$ R–stimulating activity of Ro/SSA- and La/SSB-containing ICs, but attenuated that of the U1RNP complex-containing ICs. RNase decreased autoantibody binding to the U1RNP complex, but increased autoantibody binding to Ro/SSA and La/SSB. Our results suggest that RNase enhances Fc $\gamma$ R activation by promoting the formation of ICs containing Ro/SSA or La/SSB. Our study provides insights into the pathophysiology of autoimmune diseases involving anti-Ro/SSA and anti-La/SSB autoantibodies, and into the therapeutic application of RNase treatment for systemic autoimmune diseases.

## Introduction

Systemic autoimmune diseases are caused by abnormal immune responses that damage various organs. Autoantibodies against nuclear components (antinuclear antibodies, ANAs) are often produced in systemic autoimmune diseases and are epidemiologically associated with specific clinical symptoms. Anti-U1RNP antibodies are one of the many types of ANAs and are associated with mixed connective tissue disease (MCTD), systemic lupus erythematosus (SLE), and some forms of systemic sclerosis (SSc). In addition, anti-Ro/SSA and anti-La/SSB (La) antibodies are other types of ANAs that are commonly detected in Sjögren's syndrome (SS) and are used as diagnostic markers (1).

Several ANAs target RNA-containing protein complexes called ribonucleoproteins (RNPs), such as U1RNP complex and La (2, 3). The Ro/SSA antigen consists of 2 subunits, Ro52 and Ro60, and Ro60 binds directly to RNA (1, 4). Evidence has recently accumulated regarding the RNA-containing immune complex–induced (IC-induced) production of type I interferon (IFN) from plasmacytoid dendritic cells (pDCs) via Fc $\gamma$  receptors (Fc $\gamma$ Rs) and RNA-sensing Toll-like receptors (TLRs), which are involved in the pathogenesis of various autoimmune diseases (5). Several reports showed that RNA-containing ICs induce IFN- $\alpha$  production by pDCs, and that RNase inhibits this IFN- $\alpha$  production (6–9). Based on these findings, a recombinant human RNase1 fused with the IgG1 Fc portion (RNase-Fc) that degrades RNA in ICs was expected to be effective in the treatment of SS patients possessing anti-Ro/SSA antibodies. However, IFN-induced gene expression was found to be increased in a clinical trial, although RNase1 treatment improved patient fatigue (10), indicating that RNase1 has the potential to stimulate autoimmune responses in SS. Thus, the role of RNase in the pathogenesis of systemic autoimmune diseases remains unclear.

**Conflict of interest:** The authors have declared that no conflict of interest exists.

**Copyright:** © 2023, Naito et al. This is an open access article published under the terms of the Creative Commons Attribution 4.0 International License.

**Submitted:** December 20, 2022

**Accepted:** July 6, 2023

**Published:** August 22, 2023

**Reference information:** *JCI Insight*. 2023;8(16):e167799.  
<https://doi.org/10.1172/jci.insight.167799>.

Although the binding of anti-U1RNP antibodies to the U1RNP complex is reduced by RNase treatment (2), the major autoantibody epitopes on Ro60 and La are located in or near their RNA binding sites (3, 4, 11). Therefore, we hypothesized that the removal of RNA by RNase promotes the binding of anti-Ro60 and anti-La antibodies to Ro60 and La, respectively, resulting in the enhanced Fc $\gamma$ R-stimulating activity of ICs containing Ro60 or La.

The Fc $\gamma$ R-stimulating activity of RNA-containing ICs was previously evaluated by the activation of primary cells such as pDCs (6–8). However, pDCs express not only Fc $\gamma$ Rs but also various immune receptors such as TLRs. Therefore, it was impossible to specifically evaluate the Fc $\gamma$ R-stimulating activity of RNA-containing ICs and the effect of RNase on such activity. We previously established Fc $\gamma$ R11A-expressing nuclear factor of activated T cell–driven (NFAT-driven) green fluorescent protein–expressing (GFP-expressing) reporter cells (Fc $\gamma$ R11A-reporter cells) that can specifically detect Fc $\gamma$ R11A-stimulating activity (12–16). In this study, we investigated the effect of RNase on the Fc $\gamma$ R11A-stimulating activity of ICs containing the U1RNP complex, Ro60, and La using the Fc $\gamma$ R11A-reporter cells.

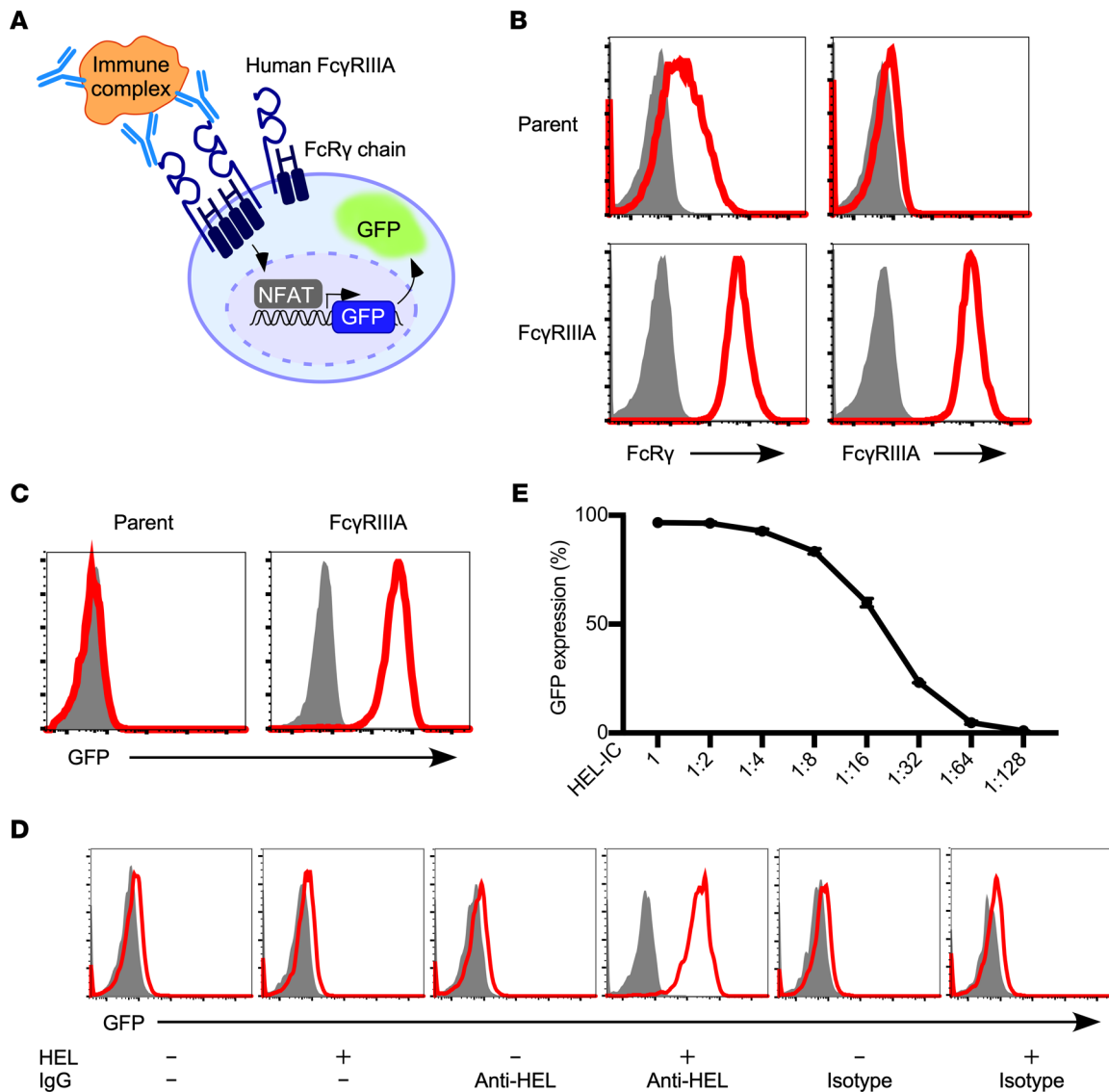
## Results

*Specific detection of the Fc $\gamma$ R11A-stimulating activity of ICs using Fc $\gamma$ R11A-reporter cells.* To detect the Fc $\gamma$ R11A-stimulating activity of ICs composed of ANAs and nuclear antigens, we generated Fc $\gamma$ R11A-reporter cells in which Fc $\gamma$ R11A-mediated signal transduction was detected by GFP expression (Figure 1A). The Fc $\gamma$  chain, which associates with Fc $\gamma$ R11A and mediates its activation signals, is expressed on the cell surface only in the presence of Fc $\gamma$ R11A (17). Indeed, reporter cells expressing FLAG-tagged Fc $\gamma$  alone were stained with anti-FLAG antibodies at low levels. In contrast, reporter cells expressing both Fc $\gamma$  and Fc $\gamma$ R11A were well stained with both anti-Fc $\gamma$ R11A and anti-FLAG antibodies (Figure 1B). The Fc $\gamma$ R11A-reporter cells expressed GFP upon stimulation with immobilized anti-Fc $\gamma$ R11A monoclonal antibodies (Figure 1C). We next examined whether the Fc $\gamma$ R11A-reporter cells are activated by ICs (Figure 1D). The Fc $\gamma$ R11A-reporter cells were activated to express GFP in the presence of ICs generated by mixing hen egg lysozyme (HEL) with anti-HEL human IgG1 antibodies but not HEL or anti-HEL human IgG1 antibodies alone. Reporter cells expressing Fc $\gamma$  chain alone were also not activated by ICs. Fc $\gamma$ R11A-reporter cells were activated by ICs in a dose-dependent manner (Figure 1E). These results indicate that the Fc $\gamma$ R11A-reporter cells specifically and quantitatively detect the Fc $\gamma$ R11A-stimulating activity of soluble ICs.

Next, we investigated the Fc $\gamma$ R-stimulating activity of ICs composed of ANAs and nuclear antigens using the Fc $\gamma$ R11A-reporter cells. ICs generated by mixing purified DNA with anti-DNA human IgG1 autoantibodies or by mixing the U1RNP complex with anti-U1RNP complex human IgG1 autoantibodies were found to stimulate the Fc $\gamma$ R11A-reporter cells but not the reporter cells lacking Fc $\gamma$ R11A (Figure 2, A and B). Control antibodies mixed with nuclear antigens did not stimulate the Fc $\gamma$ R11A-reporter cells. Similarly, ICs generated by mixing the U1RNP complex with purified serum IgG from anti-U1RNP antibody–positive SLE patients stimulated the Fc $\gamma$ R11A-reporter cells. However, U1RNP complex mixed with serum IgG from anti-U1RNP antibody–negative SLE patients did not stimulate the Fc $\gamma$ R11A-reporter cells (Figure 2C and Table 1). These results indicate that the Fc $\gamma$ R11A-reporter cells specifically detect the Fc $\gamma$ R11A-stimulating activity of ICs composed of ANAs and nuclear antigens.

*RNase1 enhances the Fc $\gamma$ R11A-stimulating activity of ICs composed of anti-Ro60 or anti-La antibodies.* It has been reported that the binding of autoantibodies to the U1RNP complex is reduced by RNase, but the binding of autoantibodies to Ro60 and La is not reduced by RNase (2, 18–20). To investigate the effect of RNase on the Fc $\gamma$ R-stimulating activity of RNA-containing ICs, we generated recombinant human RNase1 fused with the IgG1 Fc portion (RNase-Fc) in which the FcR binding sites were mutated, as RNase-Fc has also been used in previous clinical trials for SLE and SS (10, 21). RNase-Fc completely degraded RNA, and the RNase activity was blocked by an RNase inhibitor (Figure 3A).

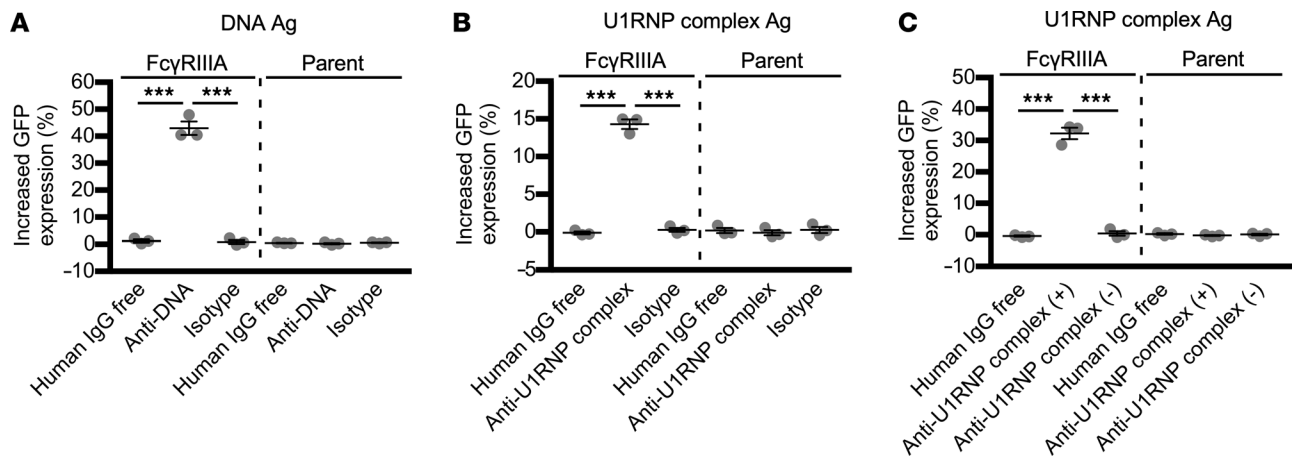
Next, we examined the effect of RNase on the Fc $\gamma$ R11A-stimulating activity of ICs containing the U1RNP complex, Ro60, and La. As predicted, RNA was detected in the U1RNP complex, Ro60, and La, but not in the control protein, bovine serum albumin (BSA). Furthermore, the RNA in these antigens was depleted by treatment with RNase-Fc (Figure 3B). No Fc $\gamma$ R11A-stimulating activity was observed for purified serum IgG obtained from patients in the absence of RNP antigen. Similarly, no stimulation of the Fc $\gamma$ R11A-reporter cells was observed for RNase-Fc or RNase inhibitor (Figure 4, A–C). We also examined the effect of RNase on the Fc $\gamma$ R11A-stimulating activity of ICs generated by mixing the U1RNP complex with serum IgG from 4 anti-U1RNP complex autoantibody–positive patients (Table 1). The Fc $\gamma$ R11A-stimulating



**Figure 1. Quantitative measurement of Fc $\gamma$ RIIIA-stimulating activity using NFAT-GFP reporter cells.** (A) Schema of Fc $\gamma$ RIIIA-transfected NFAT-GFP reporter cells (Fc $\gamma$ RIIIA-reporter cells). (B) The reporter cells were stained with an anti-FLAG monoclonal antibody (mAb) and anti-Fc $\gamma$ RIIIA mAb to examine FLAG-tagged Fc $\gamma$  chain and Fc $\gamma$ RIIIA expression. Shaded histograms represent isotype controls. (C) Activation of reporter cells by Fc $\gamma$ RIIIA cross-linking stimulation by immobilized anti-Fc $\gamma$ RIIIA mAb. Shaded histograms represent isotype controls. (D) Fc $\gamma$ RIIIA stimulation by immune complexes (ICs) composed of HEL (50 ng/well) and anti-HEL human IgG1 (250 ng/well). Shaded histograms represent parental cells. (E) GFP expression of the Fc $\gamma$ RIIIA reporter cells in relation to the serially 2-fold diluted HEL-IC (max: HEL 100 ng/well, anti-HEL IgG1 250 ng/well). Fc $\gamma$ RIIIA, Fc $\gamma$ RIIIA-reporter cells; parent, reporter cells lacking Fc $\gamma$ RIIIA; isotype, human IgG1 isotype control.

activity of the ICs generated by mixing U1RNP complex with serum IgG from anti-U1RNP autoantibody-positive MCTD or SLE patients was significantly decreased by RNase treatment, but the effect of RNase was inhibited by RNase inhibitor. The degree of reduction in the Fc $\gamma$ RIIIA-stimulating activity of U1RNP-containing ICs by RNase treatment differed among patients, with an almost complete loss observed in 2 patients with MCTD or SLE and only a slight reduction observed in the other 2 patients (Figure 4A). These data indicate that RNase reduces the Fc $\gamma$ RIIIA-stimulating activity of U1RNP-containing ICs.

Next, we examined the effect of RNase on the Fc $\gamma$ RIIIA-stimulating activity of Ro60 mixed with serum IgG obtained from anti-Ro60 antibody-positive SLE or SS patients (Table 1). We found that the RNase-untreated Ro60 mixed with anti-Ro60 antibody-positive serum IgG showed almost no Fc $\gamma$ RIIIA-stimulating activity. However, Ro60 mixed with anti-Ro60 antibody-positive serum IgG showed Fc $\gamma$ RIIIA-stimulating activity upon RNase treatment, although the effect of RNase treatment differed among patients. The Fc $\gamma$ RIIIA-stimulating activity observed in the presence of RNase was blocked



**Figure 2. Fc $\gamma$ RIIIA stimulation by ICs composed of nuclear antigens and antinuclear antibodies.** The Fc $\gamma$ RIIIA-reporter cells were incubated with mixtures of purified nuclear antigens and antinuclear antibodies as indicated below. **(A)** Purified DNA (1  $\mu$ g/well) and anti-DNA monoclonal human IgG1 (500 ng/well). **(B)** U1RNP complex (50 ng/well) and anti-U1RNP complex monoclonal human IgG1 (250 ng/well 91E12 and 250 ng/well 113F3). **(C)** U1RNP complex (50 ng/well) and anti-U1RNP antibody-positive or -negative serum IgG obtained from patients with systemic lupus erythematosus (SLE) (500 ng/well). The vertical axis represents the GFP expression change (%) of the reporter cells relative to the antigen-free control. The significance of differences was determined by 1-way ANOVA and Šidák's post hoc test. \*\*\* $P < 0.001$ . See the Figure 1 legend for other definitions.

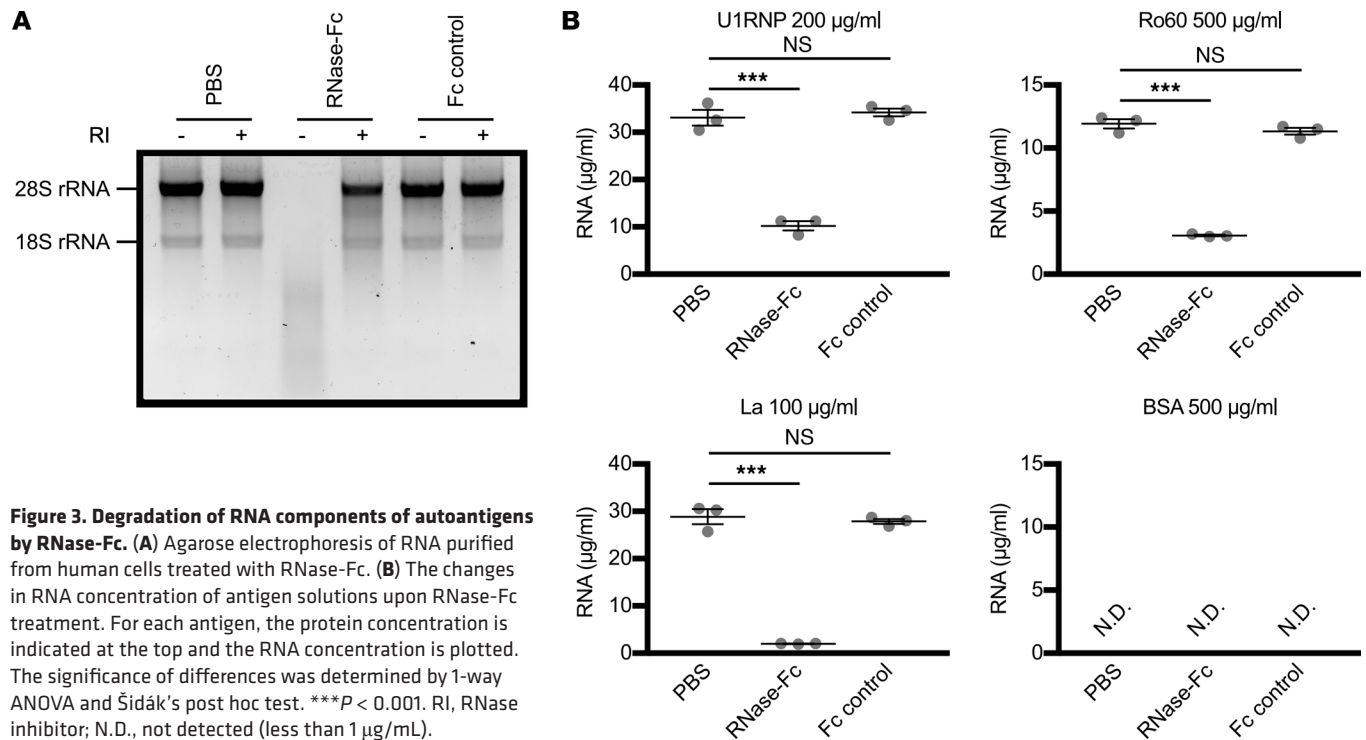
by RNase inhibitor (Figure 4B). Next, we examined the effect of RNase on the Fc $\gamma$ RIIIA-stimulating activity of La-containing ICs using serum IgG obtained from anti-La antibody-positive SLE or SS patients (Table 1). Similar to the ICs formed by Ro60 and anti-Ro60 antibodies, La mixed with serum IgG from anti-La antibody-positive SLE or SS patients did not stimulate the Fc $\gamma$ RIIIA-reporter cells, but did stimulate the reporter cells upon RNase treatment. Furthermore, the Fc $\gamma$ RIIIA-stimulating activity was abolished in the presence of RNase inhibitor (Figure 4C). RNase-treated Ro60 and La did not stimulate the reporter cells in the absence of anti-Ro60 or anti-La antibodies (Figure 4, D and E, and Table 1). The effects of RNase on the Fc $\gamma$ RIIIA-stimulating activity of Ro60- and La-containing ICs occurred in a dose-dependent manner (Figure 5). These results suggest RNase treatment facilitated the binding of anti-Ro60 antibodies to Ro60 and anti-La antibodies to La to form ICs with Fc $\gamma$ RIIIA-stimulating activity. Similar enhanced Fc $\gamma$ RIIIA-stimulating activity was observed using bovine pancreatic RNase, indicating that the generation of ICs possessing

**Table 1. Autoantibody titers and positivity of serum samples purified for IgG**

Patient ID	Anti-U1RNP complex IgG		Anti-Ro60 IgG		Anti-La IgG	
	Titer <sup>A</sup>	Positivity <sup>B</sup>	Titer <sup>A</sup>	Positivity <sup>C</sup>	Titer <sup>A</sup>	Positivity <sup>D</sup>
SLE14	75,800	+	7640	+	157	-
SLE16	81,500	+	58.7	-	57.7	-
SLE19	773	-	32,200	+	31,800	+
SS2	602	-	5500	+	54.7	-
SS3	496	-	6620	+	16,500	+
SS7	736	-	24,500	+	18,600	+
SS11	221	-	9.79	-	21.7	-
SS12	583	-	10.2	-	36.2	-
SS14	807	-	18,200	+	21,800	+
SS15	656	-	8830	+	159	-
MCTD5	38,400	+	2120	+	54.2	-
MCTD15	65,700	+	37.3	-	124	-

<sup>A</sup>Mean fluorescence intensity. <sup>B</sup>The cutoff value is  $\geq 2$ -fold relative to the 99th percentile of 50 healthy control (HC) plasma samples. <sup>C</sup>The cutoff value is  $\geq 20$ -fold relative to the 99th percentile of 50 HC plasma samples. <sup>D</sup>The cutoff value is  $\geq 30$ -fold relative to the 99th percentile of 50 HC plasma samples. SLE, systemic lupus erythematosus; SS, Sjögren's syndrome; MCTD, mixed connective tissue disease.



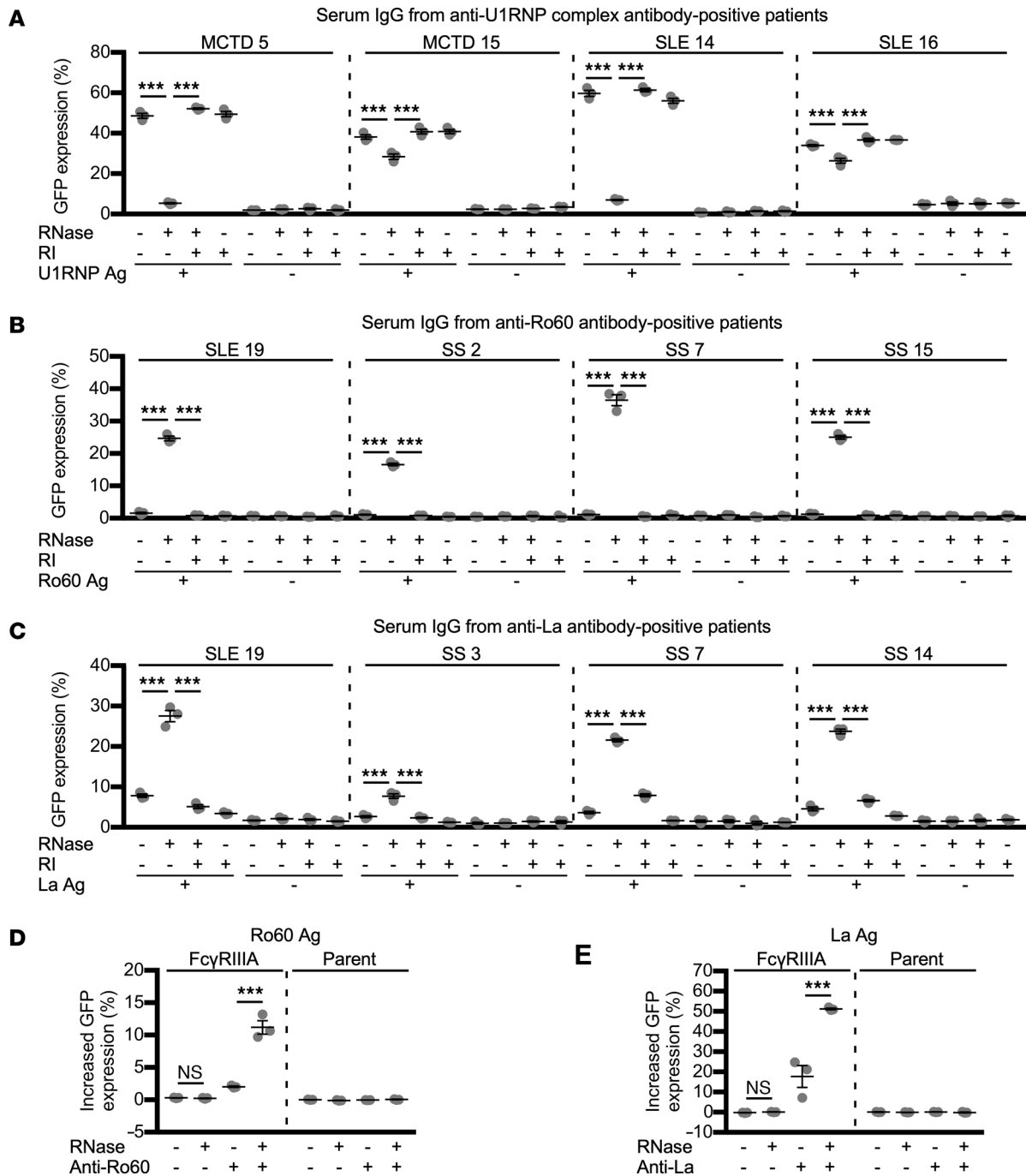


Fc $\gamma$ R11A-stimulating activity on RNase treatment in the presence of anti-Ro60 and anti-La antibodies was caused by the degradation of RNA bound to Ro60 and La (Figure 6, A and B).

The effect of RNase treatment on the Fc $\gamma$ R11A-stimulating activity of Ro60- and La-containing ICs was examined in large numbers of serum and plasma samples (Table 2). As expected, we found that RNase-treated Ro60 and La enhanced Fc $\gamma$ R11A-stimulating activity only in the presence of anti-Ro60 and anti-La antibodies, respectively (Figure 7, A and B). These results confirm that RNase treatment promotes the formation of Ro60- and La-containing ICs with Fc $\gamma$ R11A-stimulating activity. Furthermore, the enhancement of the Fc $\gamma$ R11A-stimulating activity of Ro60-containing ICs by RNase treatment was observed in samples from patients with MCTD, RA, SLE, and SS, and the enhancement of the Fc $\gamma$ R11A-stimulating activity of La-containing ICs by RNase treatment was observed in samples from patients with SLE and SS (Figure 4, B and C, and Figure 7C). These results suggest that RNase increases the Fc $\gamma$ R11A-stimulating activity of Ro60-containing and La-containing ICs in various systemic autoimmune diseases.

*RNase1 enhances the binding of autoantibodies to Ro60 and La antigens.* To investigate the mechanisms by which RNase affects the Fc $\gamma$ R11A-stimulating activity of RNA-containing ICs, we examined the effect of RNase on the binding of autoantibodies to RNP antigens. U1RNP complex, Ro60, and La antigens were captured on latex beads coupled with anti-U1RNP complex antibody, anti-Ro60 rabbit antibody, or anti-La antibody, respectively, and serum autoantibody binding to the captured RNP antigens was analyzed by flow cytometry. The binding of the serum IgG from anti-U1RNP complex antibody-positive MCTD or SLE patients to the U1RNP complex was significantly decreased by RNase treatment. The effect of RNase treatment was inhibited by RNase inhibitor (Figure 8A). These results suggest that RNA is required for the binding of anti-U1RNP complex antibodies to the U1RNP complex.

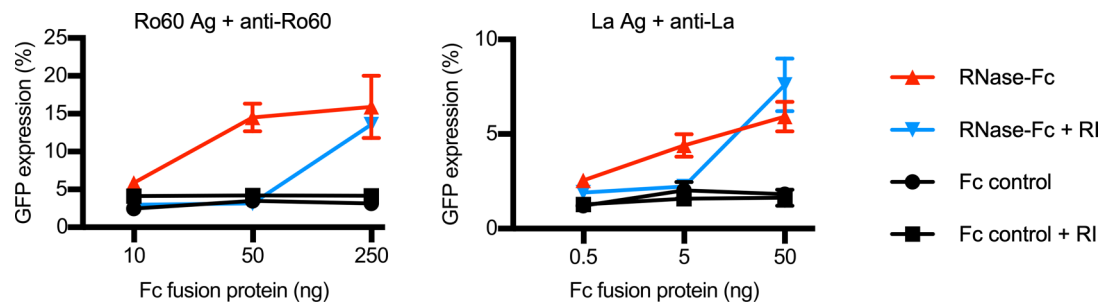
In contrast, serum IgG from anti-Ro60 antibody-positive SLE or SS patients bound to the Ro60 antigen at low levels, but the binding was significantly enhanced by RNase treatment. The enhanced autoantibody binding to Ro60 by RNase treatment was negated in the presence of RNase inhibitor (Figure 8B). Similarly, binding of serum IgG from anti-La antibody-positive SLE or SS patients to La antigen was significantly enhanced by RNase treatment, and RNase inhibitor blocked the enhancing effect of RNase treatment (Figure 8C). RNase inhibitor did not affect autoantibody binding to RNase-untreated Ro60 or La antigens (Figure 8, B and C). These results suggest that RNase treatment exposes autoantibody epitopes on Ro60 and La antigens, which promotes autoantibody binding to these RNA-binding antigens.



**Figure 4. RNase treatment enhances the FcγRIIIA-stimulating activity of Ro60- and La-containing ICs.** (A–C) The effect of RNase treatment on the FcγRIIIA-stimulating activity of mixtures of RNP antigens and serum IgG obtained from patients with systemic autoimmune diseases. (A) U1RNP complex and IgG from anti-U1RNP complex antibody-positive patients. (B) Ro60 and IgG from anti-Ro60 antibody-positive patients. (C) La and IgG from anti-La antibody-positive patients. Sample IDs are indicated at the top. (D and E) Effect of RNase on reporter cell activation by the mixture of Ro60 or La and IgG from patients with Sjögren’s syndrome (SS). In D and E, the vertical axis represents the GFP expression change (%) of the reporter cells relative to the Ro60- or La-free control. The significance of differences was determined by 1-way ANOVA and Šidák’s post hoc test. \*\*\**P* < 0.001. RI, RNase inhibitor; MCTD, mixed connective tissue disease. See the Figure 1 legend for other definitions.

*RNase activities in patients with systemic autoimmune diseases.* Finally, to address the involvement of RNase in the pathogenesis of systemic autoimmune diseases, we analyzed RNase activities in blood. However, there was no clear correlation between RNase activity and anti-U1RNP complex, anti-Ro60, or anti-La autoantibody titers (Figure 9A). On the other hand, RNase activity was slightly elevated in the patients with systemic autoimmune diseases compared with healthy control individuals. RNase activity,





**Figure 5. RNase enhances the Fc $\gamma$ R1IIIA-stimulating activity of Ro60- and La-containing ICs in a dose-dependent manner.** Relationship between RNase dosage and Fc $\gamma$ R1IIIA-stimulating activity of Ro60- and La-containing ICs. Ro60 and La were incubated with RNase-Fc at the doses shown and added to Fc $\gamma$ R1IIIA-reporter cells in combination with serum IgG from anti-Ro60- or anti-La-positive SS patients, respectively. Red represents RNase-Fc only, blue represents the combination of RNase-Fc and RNase inhibitor (RI), and black represents Fc control.

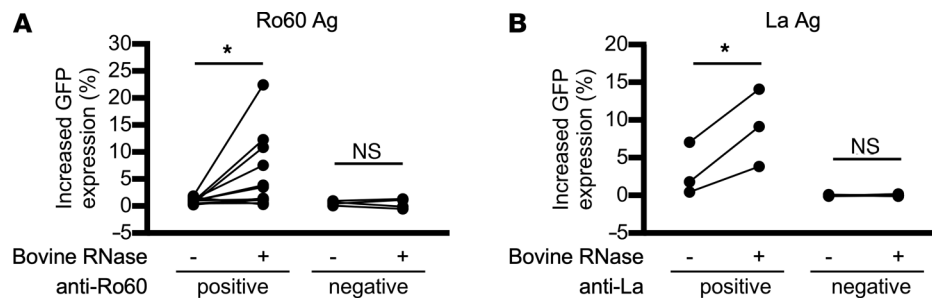
in particular, was significantly elevated in the patients with polymyositis and dermatomyositis (PM/DM) and MCTD. RNase activity was also high, but not significantly so, in patients with SS (Figure 9B). These results suggest that RNase activity is elevated in some patients with systemic autoimmune diseases, although there was no significant correlation with autoantibody titers.

## Discussion

RNase decreased the binding of autoantibodies to the U1RNP complex as well as the Fc $\gamma$ R1IIIA-stimulating activity of U1RNP complex-containing ICs. The U1RNP complex is composed of the U1-specific proteins U1-70k, U1-A, and U1-C and common Sm proteins, with U1-RNA as the core (2). U1-RNA is important for the binding of anti-U1RNP antibodies to the U1RNP complex, as U1-RNA serves as the core for the U1RNP complex and forms higher-order structural autoantibody epitopes on the U1RNP complex (2, 22). RNase appears to reduce the binding of anti-U1RNP antibodies by degrading the U1-RNA in the U1RNP complex, thereby dispersing U1-specific proteins and disrupting the higher-order structural autoantibody epitopes. The differences in the degree of reduction in the Fc $\gamma$ R1IIIA-stimulating activity of U1RNP complex-containing IC by RNase among our samples may be due to differences in the titers of the autoantibodies recognizing the U1-RNA-independent epitopes on the U1RNP complex.

In contrast, RNase facilitated the binding of anti-Ro60 and anti-La antibodies to Ro60 and La, respectively, and enhanced the Fc $\gamma$ R1IIIA-stimulating activity of Ro60- or La-containing ICs. Ro60 binds to the members of a class of noncoding RNAs (ncRNAs) called Y RNAs, as well as to misfolded and aberrant ncRNAs. Moreover, La binds to the ends of all nascent transcripts of RNA polymerase III, including Y RNAs (23). Epitope mapping studies using short peptides and recombinant protein fragments of Ro60 and La have suggested that the major autoantibody epitopes on these autoantigens are localized around their RNA binding sites (3, 4, 11). However, it is possible that the autoantibody epitopes predicted using short peptides or recombinant protein fragments do not represent the epitopes dependent on higher-order structures. Indeed, the epitopes on Ro60 are dependent on higher-order structures, and some anti-Ro60 antibodies bind to native Ro60 but not to recombinant Ro60 (4, 11, 24). Furthermore, it was unclear whether exposure of the cryptic autoantibody epitopes on Ro60 and La by removal of RNA would affect the subsequent immune response. We demonstrated that RNase treatment enhances the binding of autoantibodies to native Ro60 and La antigens, suggesting that RNA masks the major autoantibody epitopes on native Ro60 and La and blocks autoantibody binding. On the other hand, autoantibodies also bound to RNA-containing Ro60 and La antigens at low levels. As some epitopes outside the RNA-binding sites of Ro60 and La have also been reported (3), our results suggest that anti-Ro60 and anti-La antibodies that bind outside the RNA-binding sites can be detected even with RNase-untreated Ro60 and La antigens. Furthermore, we demonstrated that removal of RNA from Ro60 and La by RNase enhanced the Fc $\gamma$ R1IIIA-stimulating activity of their ICs.

RNA-containing ICs are involved in RNA-sensing TLR-mediated immune cell activation. On the other hand, Fc $\gamma$ R-mediated effector cell responses such as antibody-dependent cellular cytotoxicity, phagocytosis, and cytokine release, do not always require signal transduction through the RNA-sensing TLRs (15, 17, 25). Enhanced phagocytosis of antigens induced by Fc $\gamma$ R stimulation increases antigen presentation to T cells (26).



**Figure 6. Bovine pancreatic RNase also enhances the Fc $\gamma$ RIIIA-stimulating activity of Ro60- and La-containing ICs.** The effect of bovine pancreatic RNase treatment on the Fc $\gamma$ RIIIA-stimulating activity of Ro60- or La-containing ICs was examined. For RNase treatment, Ro60 or La and bovine pancreatic RNase were mixed in a PBS solution (50 ng of RNase per 10 ng of Ro60 or per 5 ng of La). Ro60 or La was then mixed with serum or plasma from 15 patients with SS and added to the Fc $\gamma$ RIIIA-reporter cells. **(A)** The anti-Ro60 antibody-positive group ( $n = 11$ ) and anti-Ro60 antibody-negative group ( $n = 4$ ) are shown separately, and bovine pancreatic RNase-treated Ro60 and -untreated Ro60 were compared. **(B)** The anti-La antibody-positive group ( $n = 3$ ) and anti-La antibody-negative group ( $n = 12$ ) are shown separately, and bovine pancreatic RNase-treated La and -untreated La were compared. The vertical axis represents the change in GFP expression (%) relative to the Ro60- or La-free control for each condition, and each dot represents a single patient. The significance of differences was tested using a paired, 2-tailed  $t$  test. \* $P < 0.05$ .

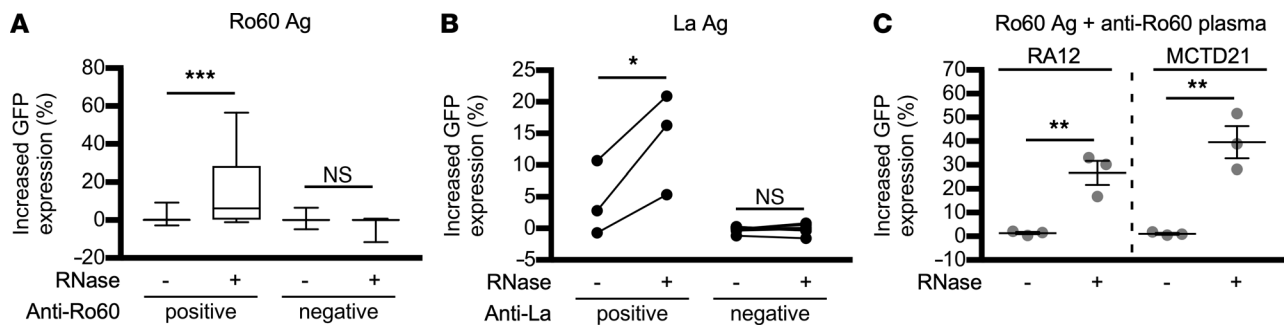
Furthermore, Fc $\gamma$ R stimulation has been reported to synergistically enhance cytokine production by effector cells in response to the stimulation of pattern recognition receptors, including RNA-sensing TLRs, and cytokine receptors (27–29). Collectively, our results suggest that RNase not only suppresses the direct stimulation of TLRs by RNA-containing ICs, but also has the potential to promote immune responses through Fc $\gamma$ R in systemic autoimmune diseases associated with anti-Ro60 and anti-La antibodies.

RNase production is reported to be enhanced at sites of inflammation and tissue injury. The RNase A family is a family of secreted RNases, currently consisting of RNase1 to RNase13, that are expressed in various organs and immune cells, have immunomodulatory and antimicrobial activities, and are secreted in response to tissue inflammation or injury (30). RNase1 is released from vascular endothelial cells at sites of acute inflammation (31). The salivary gland epithelium of SS forms an important niche for antigen-driven affinity maturation and persistence of anti-Ro60 and anti-La antibodies (32, 33), and RNase7 production was shown to be enhanced in salivary glands with lymphocytic infiltrates in SS (34). RNase T2 is upregulated in response to tissue injury and functions as an intracellular and extracellular RNase (35). Viral infections and increased expression of IFN-induced genes in systemic autoimmune diseases may induce RNase-L activation (5, 36). Increased RNase production was observed in some patients with systemic autoimmune diseases. However, RNase activity was not significantly associated with anti-U1RNP complex, anti-Ro60, or anti-La antibody titers, although it is possible that RNase activity in serum may not reflect local RNase activity in specific tissues. RNase produced upon inflammation or tissue damage might locally promote anti-Ro60 and anti-La autoantibodies to form ICs with Ro60 and La released from necrotic or apoptotic cells to cause the Fc $\gamma$ R-mediated inflammation. Indeed,

**Table 2. Titers and positivity of autoantibodies in plasma and serum samples**

Diagnosis	Anti-U1RNP complex IgG		Anti-Ro60 IgG		Anti-La IgG	
	Median (25%, 75%) <sup>A</sup>	Positive $n$ (%) <sup>B</sup>	Median (25%, 75%) <sup>A</sup>	Positive $n$ (%) <sup>C</sup>	Median (25%, 75%) <sup>A</sup>	Positive $n$ (%) <sup>D</sup>
RA ( $n = 19$ )	578 (549, 650)	0 (0)	15.5 (11.8, 27.3)	2 (10.5)	43.7 (32.8, 71.5)	0 (0)
SLE ( $n = 30$ )	5680 (915, 52,500)	18 (60)	1270 (102, 8540)	15 (50)	109 (60.1, 353)	3 (10)
SS ( $n = 15$ )	583 (554, 656)	0 (0)	4760 (374, 8830)	11 (73.3)	110 (37.3, 3860)	3 (20)
SSc ( $n = 16$ )	572 (542, 629)	1 (6.25)	12.4 (11.1, 58.3)	2 (12.5)	51.7 (43.5, 89.2)	0 (0)
PM/DM ( $n = 17$ )	618 (568, 670)	0 (0)	13.5 (10.8, 58.2)	2 (11.8)	59.1 (43.3, 109)	0 (0)
MCTD ( $n = 27$ )	27600 (14,200, 65,700)	26 (96.3)	113 (19.1, 2120)	10 (37)	54.2 (41.7, 124)	1 (3.7)
HC ( $n = 50$ )	570 (542, 597)	0 (0)	10.5 (9.91, 11.4)	0 (0)	42.8 (37.3, 55.8)	0 (0)

<sup>A</sup>Mean fluorescence intensity. <sup>B</sup>The cutoff value is  $\geq 2$ -fold relative to the 99th percentile of 50 healthy control (HC) plasma samples. <sup>C</sup>The cutoff value is  $\geq 20$ -fold relative to the 99th percentile of 50 HC plasma samples. <sup>D</sup>The cutoff value is  $\geq 30$ -fold relative to the 99th percentile of 50 HC plasma samples. RA, rheumatoid arthritis; SLE, systemic lupus erythematosus; SS, Sjögren's syndrome; SSc, systemic sclerosis; PM/DM, polymyositis and dermatomyositis; MCTD, mixed connective tissue disease.



**Figure 7. Enhancement of the Fc $\gamma$ RIIIA-stimulating activity of Ro60 and La by RNase requires anti-Ro60 and anti-La antibodies, respectively.** The effect of RNase on the Fc $\gamma$ RIIIA-stimulating activity of Ro60 or La mixed with the serum or plasma from patients with systemic autoimmune diseases and healthy donors was examined. **(A)** For Ro60, 174 samples were examined and are shown separately as the anti-Ro60 antibody-positive group ( $n = 42$ ) and -negative group ( $n = 132$ ). **(B)** For La, 15 patients with SS were examined and are shown separately as the anti-La antibody-positive SS group ( $n = 3$ ) and -negative SS group ( $n = 12$ ). **(C)** The effect of RNase on the Fc $\gamma$ RIIIA-stimulating activity of Ro60 mixed with anti-Ro60 antibody-containing plasma from a patient with rheumatoid arthritis (RA) or MCTD. In **A**, the median, 25th percentile, 75th percentile (box), and range (whiskers) are shown. In **B**, each dot represents 1 patient. In **C**, the results of 3 independent experiments with plasma from 1 patient are plotted. In **A–C**, the vertical axis represents the change in GFP expression (%) of reporter cells relative to the Ro60- or La-free control for each condition. The significance of differences was determined by paired, 2-tailed  $t$  test in **A** and **B**, and by 2-tailed Student's  $t$  test in **C**. \* $P < 0.05$ , \*\* $P < 0.01$ , \*\*\* $P < 0.001$ .

the epitope of the anti-Ro60 antibody produced in the earliest stage of SLE is located in the RNA-binding site of the Ro60 antigen (4). Therefore, local RNase production might be involved in autoantibody production by exposing cryptic epitopes on Ro60.

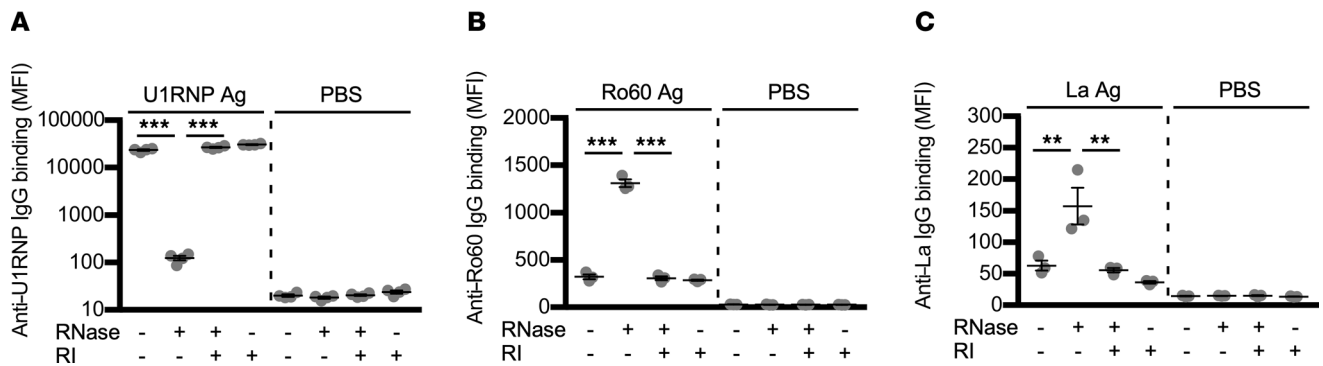
The administration of RNase has been widely investigated for application to the treatment of various inflammatory and ischemic diseases (31), and RNase-Fc is one of candidates for the treatment of systemic autoimmune diseases (5). However, a clinical trial of RNase treatment in anti-Ro antibody-positive SS patients showed the increased IFN-induced gene expression, with the mechanism underlying the enhanced immune response remaining unclear (10). Our results suggest that RNase exacerbates immune responses in the presence of anti-Ro60 and anti-La antibodies by enhancing the FcR-stimulating activity of ICs, and that caution should be exercised in the clinical application of RNase therapy. RNase treatment might be effective in patients with anti-U1RNP complex antibodies but without anti-Ro60 and anti-La antibodies. Further studies are needed to select appropriate patients suitable for RNase therapy, both to ensure safety and enhance therapeutic efficacy.

A limitation of this study is that we addressed only 3 representative RNA-associated antigens. As other autoantibodies targeting RNA-associated antigens such as aminoacyl-tRNA synthetases also appear (1), other RNA-associated antigens should be investigated to provide a better understanding of the role of RNase in the pathogenesis of systemic autoimmune diseases. In addition, we specifically analyzed the effect of RNase on Fc $\gamma$ RIIIA-stimulating activity of RNA-containing ICs. Although activating Fc $\gamma$ Rs are the major targets for ICs, most immune cells possessing activating Fc $\gamma$ Rs also express other types of immune receptors, such as inhibitory Fc $\gamma$ RIIB and RNA-sensing TLRs. Therefore, the effects of RNase on ICs would be modulated by these receptors. Further studies are required to clarify the exact function of RNase on RNA-containing ICs in vivo (5, 17).

In summary, RNase reduced the Fc $\gamma$ RIIIA-stimulating activity of U1RNP complex-containing ICs, but enhanced that of both Ro60- and La-containing ICs. These findings suggest that RNase may be involved in promoting autoimmune responses to Ro60 and La. Further studies are needed to elucidate the role of RNase in systemic autoimmune diseases.

## Methods

**Human samples.** Serum and plasma samples from 124 patients with systemic autoimmune diseases were obtained from Kyoto University. According to the classification criteria, 27 patients were classified as MCTD (37), 17 patients as “probable” or “definite” PM/DM (38), 19 patients as rheumatoid arthritis (RA) (39), 30 patients as SLE (40, 41), 15 patients as SS (42), and 16 patients as SSc (43). Patients meeting the MCTD classification criteria were classified as MCTD, even when the patients satisfied the classification criteria of other autoimmune diseases. All patients met only one classification criterion, except for the PM/DM, SLE, or SSc criteria in MCTD patients. CORE Kit (George King Bio-Medical) samples were



**Figure 8. RNase increases the binding of anti-Ro60 antibodies to Ro60 and anti-La antibodies to La.** As indicated below, RNase-treated or -untreated RNP antigens captured on autoantibody-coupled beads were detected by biotinylated serum IgG from patients with systemic autoimmune diseases and allophycocyanin-labeled streptavidin. **(A)** U1RNP complex captured on anti-U1RNP complex monoclonal antibody-coupled beads was detected by serum IgG from anti-U1RNP complex antibody-positive patients (ID: MCTD5 and SLE14). **(B)** Ro60 captured on anti-Ro60 rabbit antibody-coupled beads was detected by serum IgG from anti-Ro60 antibody-positive patients (ID: SLE19 and SS15). **(C)** La captured on anti-La rabbit antibody-coupled beads was detected by serum IgG from anti-La antibody-positive patients (ID: SLE19 and SS3). The significance of differences was determined by 1-way ANOVA and Šidák's post hoc test. \*\* $P < 0.01$ ; \*\*\* $P < 0.001$ .

used as healthy controls. IgG samples were purified from patients from whom sufficient serum or plasma samples were obtained, using recombinant protein A–Sepharose (GE Healthcare).

**Plasmids.** For production of recombinant human RNase-Fc, a pCAGGS expression vector encoding a mouse CD150 leader sequence at the N-terminus and the Fc portion of human IgG1 at the C-terminus (mutated to reduce binding to FcRs) was used as described previously (44). The full-length complementary DNA (cDNA) of human *RNASE1* (accession no. NM\_198234.3) was obtained by PCR amplification from cDNA prepared from human pancreatic total RNA (Clontech). A pCAGGS vector encoding the human IgG1 Fc portion without human RNase1 (Fc control) was also generated. Sequences of all constructs were confirmed by DNA sequencing (ABI 3130xl DNA Sequencer; Applied Biosciences). The expression vectors encoding anti-DNA human IgG1 (71F12) and anti-U1RNP complex human IgG1 (91E12 and 113F3) were provided by Hitoshi Kikutani (Osaka University, Osaka, Japan) (45). Plasmids for anti-HEL IgG1 (HyHEL10) and human *FCGR3A 176V* genotype (accession no. NM\_000569.7) were used as previously described (15, 46).

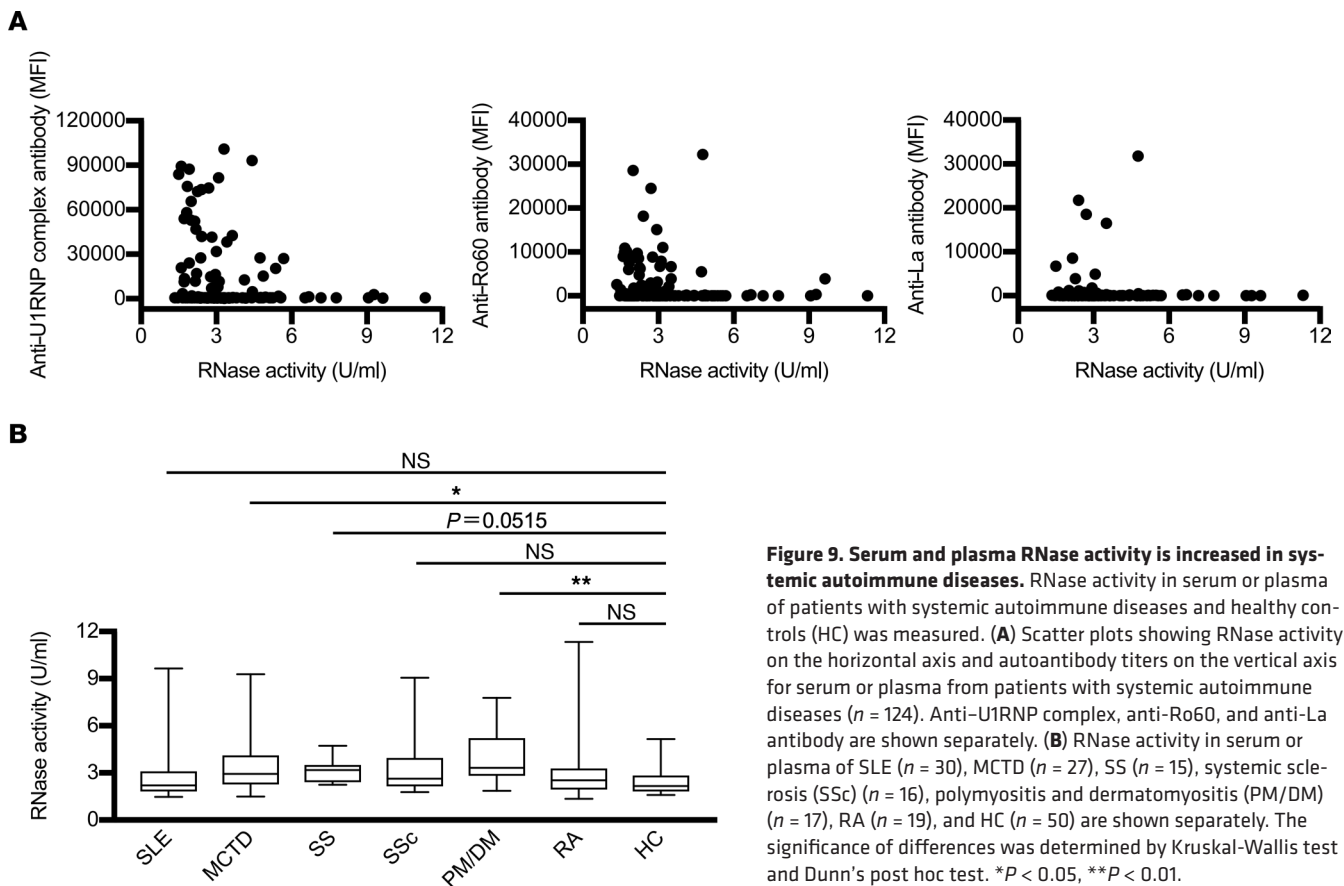
**Cell lines.** As previously described (15), FcγRIIIA-reporter cells were generated by retroviral transfection of full-length FcγRIIIA into a mouse T cell hybridoma stably transfected with the NFAT-GFP reporter gene and the FLAG-tagged FcRγ gene (parental cell). Expi293F cells were purchased from Thermo Fisher Scientific. These cells were routinely examined for mycoplasma contamination.

**Antibodies and recombinant proteins.** Anti-FcγRIIIA monoclonal antibody (3G8; BioLegend), anti-FLAG monoclonal antibody (L5; BioLegend), anti-Ro60 rabbit polyclonal antibody (HPA002835; Sigma-Aldrich), anti-La rabbit polyclonal antibody (AV40461; Sigma-Aldrich), bovine pancreatic RNase (Roche), and RNase inhibitor (RNasin; Promega) were purchased as indicated. Anti-DNA human IgG1 (71F12), anti-U1RNP complex human IgG1 (91F12 and 113F3), anti-HEL human IgG1 (HyHEL10), RNase-Fc, and Fc control were obtained by transfection of each expression vector into Expi293F cells (Gxpress 293 Transfection Kit; Gmep) and purification from the culture supernatant using recombinant protein A–Sepharose (GE Healthcare).

**Purified DNA and RNA.** DNA and RNA were purified from Expi293F cells using purification kits (Wizard SV Genomic DNA Purification System, Promega; RNeasy Mini Kit, Qiagen), and suspended in PBS.

**Purified nuclear antigens.** Bovine and/or rabbit U1RNP complex (SRC-3000; ImmunoVision), Ro60 from calf (ATR02; AROTEC), and La from calf and/or rabbit (SSB-3000; ImmunoVision) origins were purchased.

**Measurement of autoantibody titers in serum and plasma samples.** U1RNP complex-, Ro60-, or La-coupled Aldehyde/Sulfate Latex Beads (Life Technologies) were incubated with serum/plasma samples (diluted 1:1000) followed by allophycocyanin-conjugated (APC-conjugated) anti-human IgG (H+L) (Jackson ImmunoResearch), and the levels of IgG bound to the beads were analyzed using FACSVerse (Becton Dickinson). The positive cutoff values were defined as relative to the 99th percentile value of 50 healthy control samples, greater than 2-fold for anti-U1RNP complex antibody, greater than 20-fold for anti-Ro60 antibody, and greater than 30-fold for anti-La antibody.



**Figure 9. Serum and plasma RNase activity is increased in systemic autoimmune diseases.** RNase activity in serum or plasma of patients with systemic autoimmune diseases and healthy controls (HC) was measured. **(A)** Scatter plots showing RNase activity on the horizontal axis and autoantibody titers on the vertical axis for serum or plasma from patients with systemic autoimmune diseases ( $n = 124$ ). Anti-U1RNP complex, anti-Ro60, and anti-La antibody are shown separately. **(B)** RNase activity in serum or plasma of SLE ( $n = 30$ ), MCTD ( $n = 27$ ), SS ( $n = 15$ ), systemic sclerosis (SSc) ( $n = 16$ ), polymyositis and dermatomyositis (PM/DM) ( $n = 17$ ), RA ( $n = 19$ ), and HC ( $n = 50$ ) are shown separately. The significance of differences was determined by Kruskal-Wallis test and Dunn's post hoc test. \* $P < 0.05$ , \*\* $P < 0.01$ .

**Reporter assay.** The Fc $\gamma$ RIIIA-reporter cells were suspended in RPMI1640 medium with 10% FBS, seeded into 384-well culture plates (Greiner Bio-One) at 2500 cells per well, and incubated overnight or for 2 nights with antigen and IgG or serum/plasma samples. Fc $\gamma$ RIIIA-stimulating activity was evaluated by the proportion of reporter cells expressing GFP using FACSVerse (Becton Dickinson). Stimulation of reporter cells with immobilized antibodies was performed as previously described (15). For RNase treatment, U1RNP complex, Ro60, or La and RNase were mixed in PBS solution, incubated at 37°C for 1 hour, and then added to plated reporter cells with IgG or serum/plasma samples. RNase-Fc (or Fc control) was added at 1 ng per 10 ng of U1RNP complex, 5 ng per 10 ng of Ro60, and 1 ng per 10 ng of La, respectively. When used, RNase inhibitor was added at 1 U per 5  $\mu$ g of RNase-Fc. U1RNP complex was added at 50 ng per well, Ro60 at 100 ng per well, and La at 50 ng per well, respectively. Anti-U1RNP-positive IgG was added at 500 ng per well, anti-Ro60-positive IgG at 1  $\mu$ g per well, anti-La-positive IgG at 1  $\mu$ g per well, and serum/plasma samples at 25 nL per well.

**Assay of RNase activity by nondenaturing agarose gel electrophoresis.** One microgram of purified RNA was incubated with 0.5 ng of RNase-Fc with or without 20 U of RNase inhibitor at 37°C for 30 minutes, and then heated at 70°C for 10 minutes, electrophoresed in a 1% agarose gel, stained with SYBR Safe DNA Gel Stain (Thermo Fisher Scientific), and subsequently imaged (ChemiDoc Touch; Bio-Rad).

**Measurement of RNA concentration in antigen solutions.** U1RNP complex, Ro60, La, and BSA were suspended in PBS at 200, 500, 100, and 500  $\mu$ g/mL, respectively, with or without 50  $\mu$ g/mL RNase-Fc (or Fc control). After incubation at 37°C for 1 hour, the RNA concentration of these antigen solutions was measured using Qubit RNA BR Assay Kit (Thermo Fisher Scientific).

**Measurement of RNase activity in serum and plasma samples.** Serum and plasma samples were diluted 3000-fold in RNase-free water, and their RNase activity was measured using the RNaseAlert QC System (Thermo Fisher Scientific). RNase activity was determined by a calibration curve prepared using serially diluted RNase A.

**Detection of the immunoprecipitation of RNase-treated antigens by flow cytometry.** U1RNP complex, Ro60, and La were each suspended in PBS, and RNase-Fc (or Fc control) was added at 10 ng per 10 ng of U1RNP complex, 50 ng per 10 ng of Ro60, and 10 ng per 10 ng of La and incubated at 37°C for 1 hour. RNase



inhibitor was, if used, added at 1 U per 5  $\mu$ g of RNase-Fc. The RNase-treated U1RNP complex, Ro60, and La were then incubated with anti-U1RNP complex monoclonal antibody (91E12)–, anti-Ro60 rabbit antibody–, or anti-La rabbit antibody–coupled latex beads (Aldehyde/Sulfate Latex Beads; Life Technologies) at 4°C for 20 minutes. Thereafter, the latex beads were washed and again incubated with biotinylated serum IgG from patients prepared by EZ-Link Sulfo-NHS-LC-Biotin (Thermo Fisher Scientific) at 4°C for 20 minutes. The beads were then washed, stained with APC-streptavidin (Jackson ImmunoResearch), and analyzed with FACSVerse (Becton Dickinson).

**Statistics.** Two-tailed Mann-Whitney *U* test, Student's *t* test, paired *t* test, 1-way ANOVA with Šidák's post hoc test, or Kruskal-Wallis test with Dunn's post hoc test was used to determine the significance of differences. Adjusted *P* values of less than 0.05 were considered statistically significant. Calculations and graphing were performed using Prism 7.0 software (GraphPad Software). Significance levels were assigned as follows: NS, not significant, \**P* < 0.05, \*\**P* < 0.01, \*\*\**P* < 0.001. Unless otherwise indicated, the values in the figures are the mean  $\pm$  SEM of triplicate experiments. All results in the figures are representative of at least 3 independent experiments.

**Study approval.** Protocols for the collection and use of serum and plasma samples were approved by the Institutional Review Boards (IRBs) of Kyoto University (G1006-13, R1540-6) and Osaka University (IFReC imm-4-2, 2020-19). Written informed consent was obtained from all participants in accordance with the Declaration of Helsinki and the relevant guidelines of the respective IRBs.

## Author contributions

RN, KO, and HA conceived of the study. RN and SH developed the protocol. RN and SH did the literature search. RN and SH appraised study quality, and extracted and analyzed the data. All authors contributed to the data interpretation. All authors contributed to the preparation of the manuscript, approved the final submitted version, and agreed to be listed as authors. HA is responsible for the overall content as the guarantor.

## Acknowledgments

We thank S. Matsuoka, A. Tada, and A. Arakawa for their technical assistance. We also thank Y. Inaba for her secretarial assistance. This work was funded by grants from the Japan Agency for Medical Research and Development (grant no. 23ek0410088h) and JSPS KAKENHI (grant no. JP22H04989).

Address correspondence to: Hisashi Arase, Professor of Laboratory of Immunochemistry, WPI Immunology Frontier Research Center, Osaka University, 3-1 Yamadaoka, Suita, Osaka 565-0871, Japan. Phone: 81.6.6879.8291; Email: arase@biken.osaka-u.ac.jp.

1. Didier K, et al. Autoantibodies associated with connective tissue diseases: what meaning for clinicians? *Front Immunol.* 2018;9:541.
2. Kattah NH, et al. The U1-snRNP complex: structural properties relating to autoimmune pathogenesis in rheumatic diseases. *Immunol Rev.* 2010;233(1):126–145.
3. Routsias JG, Tzioufas AG. B-cell epitopes of the intracellular autoantigens Ro/SSA and La/SSB: tools to study the regulation of the autoimmune response. *J Autoimmun.* 2010;35(3):256–264.
4. Wolin SL, Reinisch KM. The Ro 60 kDa autoantigen comes into focus: interpreting epitope mapping experiments on the basis of structure. *Autoimmun Rev.* 2006;5(6):367–372.
5. Barrat FJ, et al. Interferon target-gene expression and epigenomic signatures in health and disease. *Nat Immunol.* 2019;20(12):1574–1583.
6. Lövgren T, et al. Induction of interferon-alpha production in plasmacytoid dendritic cells by immune complexes containing nucleic acid released by necrotic or late apoptotic cells and lupus IgG. *Arthritis Rheum.* 2004;50(6):1861–1872.
7. Båve U, et al. Activation of the type I interferon system in primary Sjögren's syndrome: a possible etiopathogenic mechanism. *Arthritis Rheum.* 2005;52(4):1185–1195.
8. Lövgren T, et al. Induction of interferon-alpha by immune complexes or liposomes containing systemic lupus erythematosus autoantigen- and Sjögren's syndrome autoantigen-associated RNA. *Arthritis Rheum.* 2006;54(6):1917–1927.
9. Eloranta ML, et al. A possible mechanism for endogenous activation of the type I interferon system in myositis patients with anti-Jo-1 or anti-Ro 52/anti-Ro 60 autoantibodies. *Arthritis Rheum.* 2007;56(9):3112–3124.
10. Posada J, et al. Improvement of severe fatigue following nuclease therapy in patients with primary Sjögren's syndrome: a randomized clinical trial. *Arthritis Rheumatol.* 2021;73(1):143–150.
11. Scofield RH, et al. Fine specificity of the autoimmune response to the Ro/SSA and La/SSB ribonucleoproteins. *Arthritis Rheum.* 1999;42(2):199–209.
12. Arase H, et al. Direct recognition of cytomegalovirus by activating and inhibitory NK cell receptors. *Science.* 2002;296(5571):1323–1326.



13. Ohtsuka M, et al. NFAM1, an immunoreceptor tyrosine-based activation motif-bearing molecule that regulates B cell development and signaling. *Proc Natl Acad Sci U S A*. 2004;101(21):8126–8131.
14. Saito F, et al. Immune evasion of *Plasmodium falciparum* by RIFIN via inhibitory receptors. *Nature*. 2017;552(7683):101–105.
15. Shimizu Y, et al. FcγRIIIA-mediated activation of NK cells by IgG heavy chain complexed with MHC class II molecules. *Int Immunol*. 2019;31(5):303–314.
16. Harrison TE, et al. Structural basis for RIFIN-mediated activation of LILRB1 in malaria. *Nature*. 2020;587(7833):309–312.
17. Nimmerjahn F, Ravetch JV. Fcγ receptors as regulators of immune responses. *Nat Rev Immunol*. 2008;8(1):34–47.
18. Anderson JR, et al. Precipitating autoantibodies in Sjögren's disease. *Lancet*. 1961;2(7200):456–460.
19. Alspaugh MA, Tan EM. Precipitating antibodies to cellular antigens in Sjögren's syndrome, rheumatoid arthritis, and other organ and nonorgan-specific autoimmune diseases. *Ann Rheum Dis*. 1975;55(3):1067–1246.
20. Franceschini F, Cavazzana I. Anti-Ro/SSA and La/SSB antibodies. *Autoimmunity*. 2005;38(1):55–63.
21. Burge DJ, et al. Safety, pharmacokinetics, and pharmacodynamics of RSLV-132, an RNase-Fc fusion protein in systemic lupus erythematosus: a randomized, double-blind, placebo-controlled study. *Lupus*. 2017;26(8):825–834.
22. Murakami A, et al. A new conformational epitope generated by the binding of recombinant 70-kd protein and U1 RNA to anti-U1 RNP autoantibodies in sera from patients with mixed connective tissue disease. *Arthritis Rheum*. 2002;46(12):3273–3282.
23. Boccitto M, Wolin SL. Ro60 and Y RNAs: structure, functions, and roles in autoimmunity. *Crit Rev Biochem Mol Biol*. 2019;54(2):133–152.
24. Brito-Zerón P, et al. The clinical spectrum of autoimmune congenital heart block. *Nat Rev Rheumatol*. 2015;11(5):301–312.
25. Bonegio RG, et al. Lupus-associated immune complexes activate human neutrophils in an FcγRIIA-dependent but TLR-independent response. *J Immunol*. 2019;202(3):675–683.
26. Junker F, et al. Fc gamma receptors and their role in antigen uptake, presentation, and T cell activation. *Front Immunol*. 2020;11:1393.
27. den Dunnen J, et al. IgG opsonization of bacteria promotes Th17 responses via synergy between TLRs and FcγRIIIa in human dendritic cells. *Blood*. 2012;120:112–121.
28. Vogelpoel LT, et al. Fc gamma receptor-TLR cross-talk elicits pro-inflammatory cytokine production by human M2 macrophages. *Nat Commun*. 2014;5:5444.
29. Vogelpoel LT, et al. FcγRIIIa cross-talk with TLRs, IL-1R, and IFNγR selectively modulates cytokine production in human myeloid cells. *Immunobiology*. 2015;220(2):193–199.
30. Lu L, et al. Immune modulation by human secreted RNases at the extracellular space. *Front Immunol*. 2018;9:1012.
31. Bedenbender K, Schmeck BT. Endothelial ribonuclease 1 in cardiovascular and systemic inflammation. *Front Cell Dev Biol*. 2020;8:576491.
32. Bombardieri M, et al. Ectopic lymphoid neogenesis in rheumatic autoimmune diseases. *Nat Rev Rheumatol*. 2017;13(3):141–154.
33. Verstappen GM, et al. Epithelial-immune cell interplay in primary Sjögren syndrome salivary gland pathogenesis. *Nat Rev Rheumatol*. 2021;17(6):333–348.
34. Neopane P, et al. Immunohistochemical localization of RNase 7 in normal and inflamed oral epithelia and salivary glands. *Acta Histochem Cytochem*. 2019;52(2):35–43.
35. Wu L, et al. RNase T2 in inflammation and cancer: immunological and biological views. *Front Immunol*. 2020;11:1554.
36. Ezelle HJ, et al. The roles of RNase-L in antimicrobial immunity and the cytoskeleton-associated innate response. *Int J Mol Sci*. 2016;17(1):74.
37. Tanaka Y, et al. 2019 Diagnostic criteria for mixed connective tissue disease (MCTD): from the Japan research committee of the ministry of health, labor, and welfare for systemic autoimmune diseases. *Mod Rheumatol*. 2021;31(1):29–33.
38. Lundberg IE, et al. 2017 European League Against Rheumatism/American College of Rheumatology classification criteria for adult and juvenile idiopathic inflammatory myopathies and their major subgroups. *Arthritis Rheumatol*. 2017;69:2271–2282.
39. Aletaha D, et al. 2010 Rheumatoid arthritis classification criteria: an American College of Rheumatology/European League Against Rheumatism collaborative initiative. *Arthritis Rheum*. 2010;62(9):2569–2581.
40. Tan EM, et al. The 1982 revised criteria for the classification of systemic lupus erythematosus. *Arthritis Rheum*. 1982;25(11):1271–1277.
41. Hochberg MC. Updating the American College of Rheumatology revised criteria for the classification of systemic lupus erythematosus. *Arthritis Rheum*. 1997;40(9):1725.
42. Fujibayashi T, et al. Revised Japanese criteria for Sjögren's syndrome (1999): availability and validity. *Mod Rheumatol*. 2004;14(1999):425–434.
43. Van den Hoogen F, et al. 2013 classification criteria for systemic sclerosis: an American College of Rheumatology/European League against Rheumatism collaborative initiative. *Arthritis Rheum*. 2013;65:2737–2747.
44. Satoh T, et al. PILRALpha is a herpes simplex virus-1 entry coreceptor that associates with glycoprotein B. *Cell*. 2008;132(6):935–944.
45. Sakakibara S, et al. Clonal evolution and antigen recognition of anti-nuclear antibodies in acute systemic lupus erythematosus. *Sci Rep*. 2017;7(1):16428.
46. Jiang Y, et al. Transport of misfolded endoplasmic reticulum proteins to the cell surface by MHC class II molecules. *Int Immunol*. 2013;25(4):235–246.